



## **Back pillow lifter**

### ***Item 823068***

#### **IMPORTANT NOTES**

ENSURE THESE INSTRUCTIONS ARE READ AND FULLY UNDERSTOOD BEFORE USE.

PLEASE KEEP IN A SAFE PLACE FOR FUTURE REFERENCE.

HEALTH AND SOCIAL SERVICES ISSUERS -THESE INSTRUCTIONS SHOULD BE LEFT WITH THE

CLIENT / USER OF THE PILLOW LIFTER TO CONSULT AS REQUIRED.

--A risk assessment must be carried out as to the suitability of this product particularly with new users. The following risks should be considered: Entrapment of fingers, body parts or tissue.

--Has the product been fitted to the bed safely?

--Is its Safe Working Load appropriate?

--Will user's health deterioration require further regular reviews?

--Keep clear of moving parts and make sure there are no obstructions when lowering or raising the Back Lifter.

--Ensure that you have read and understood these instructions, including the glossary of symbols.

--Ensure that an inspection of the Back Lifter is carried out on a regular basis.

--Do not allow children to play with the Back Lifter.

--Do not exceed the safe working load (SWL) of 80kg

---

## Contents



Check the contents of the carton :

1. Back Lifter Base
2. Mattress Pad
3. Adapter
4. Controller
5. Fasten Band
6. Pad Cover
7. Users Manual



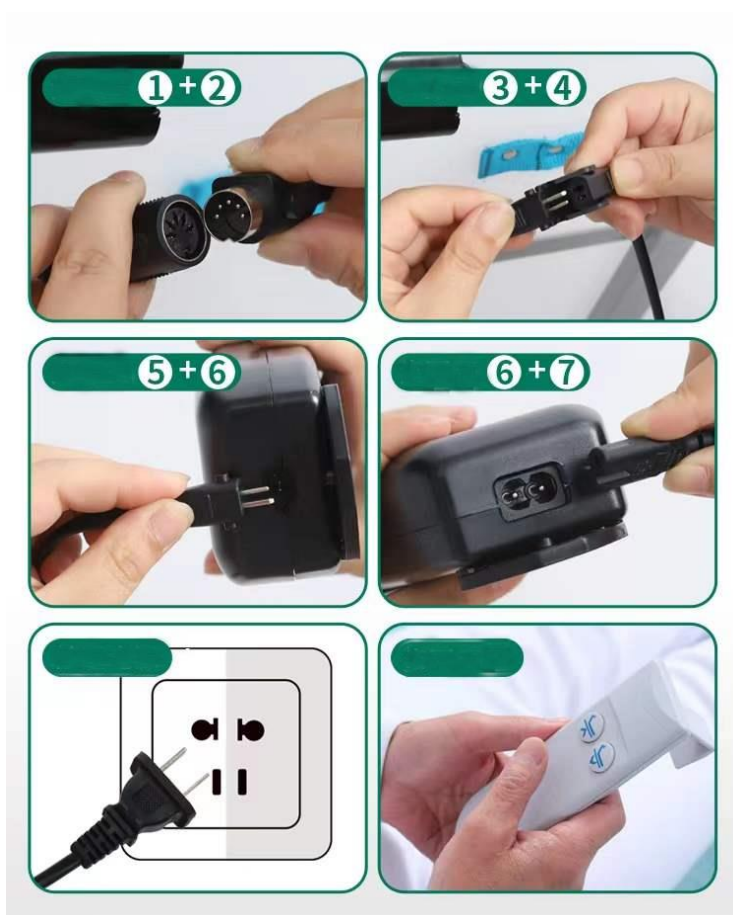
## Brief

The Back Lifter is designed to be placed on the bed to suit the requirements of the user. On a single bed the unit is placed centrally or slightly to one side, at the head end of the bed. On a wide bed the unit is placed on the user's side of the bed at the head end of the bed. The supplied strap may be used for additional stability and security. The Back Lifter will lift the upper body of a user, with a maximum total body weight 80kg, from 2° to 80°. It is operated by a two-button hand control, and supplied with two fitted sheets with tailored pillow pocket.

## Assembly

### 1. Fasten

- 1.1 Place the Back Lifter on the bed, with the frame down and actuator facing up.
- 1.2 Insert the remote control connection line and landing gear connection line into the corresponding hole position in the adapter, and put the connection line into the wiring harness position on the adapter.





1.3 Place the adapter flat on the floor or under the bed;



## 2. Controller

3.1 Control functions are achieved by pressing the "up" or "down" keys above the remote control



### 3. Maintenance

- 5.1 If a fixed strap is used, check the tightness of the strap regularly to ensure that it is stable;
- 5.2 Please check the position of the electric backrest before each use and whether it is placed correctly;
- 5.3 Please regularly wipe the surface of the landing gear with dust or dirt;
- 5.4 Please check the integrity of the power cord, power supply or transformer regularly every six months;
- 5.5 Please check the landing gear hub components regularly every six months, repair or replace them;
- 5.6 Please conduct a thorough inspection, repair or replacement of the Products annually;
- 5.7 Please check the backup battery every 3 months, raise the backrest to a position 15 cm above the ground, then unplug the power supply, press the remote control down button, if the position of the backrest does not drop, you need to replace the battery;

### 4. Troubleshooting methods

Problem	Cause	Action
The controller does not respond	<ol style="list-style-type: none"> <li>1. The plug of the power cord is not plugged in</li> <li>2. Whether the outlet is energized</li> <li>3. Whether the manual controller plug is connected</li> </ol>	<p>Plug the plug in</p> <p>Plug in other appliances in the outlet to confirm</p> <p>Check the manual controller plug</p>
A noise is emitted during operation	<ol style="list-style-type: none"> <li>1. Please confirm where the murmur is coming from</li> <li>2. Whether there is a foreign object entering the drive</li> <li>3. Whether the auxiliary wake-up machine is placed smoothly</li> </ol>	<p>If it is an active part, add lubricating oil</p> <p>Remove debris</p>
The motor reacts when not in operation	<ol style="list-style-type: none"> <li>1. Whether the hand button switch fails</li> <li>2. Whether to set the linkage function</li> </ol>	<p>Turn off the power supply and report it to the maintenance department</p> <p>Weight function</p>

---

## **5. Parameters**

- 6.1 Backplate: 6100 x 7500 mm
- 6.2 Base frame: 610mm x 780mm
- 6.3 The mattress: 1100 x 7500mm
- 6.4 Backplate folding angle: 1 °-85°
- 6.5 Supply voltage: 220V, 50Hz
- 6.6 The backplate max load: 80kg
- 6.7 Net weight: 13kg
- 6.8 Input power: 400VA
- 6.9 Current: 2A

Distributed by :

### **Identités**

Boulevard de la Chanterie  
F-49124 Saint Barthélémy d'Anjou  
France