



Assembly Instruction

50346FSC Wall Toy-Crocodile

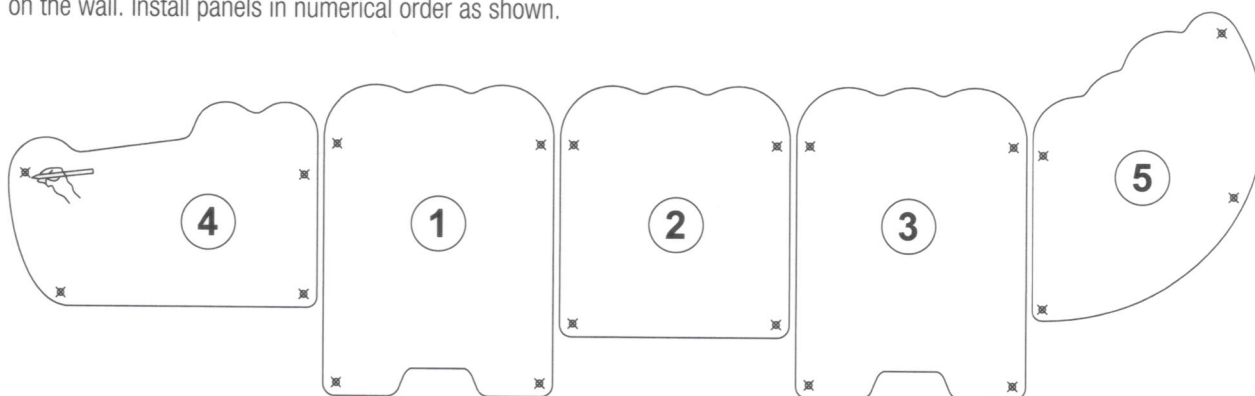
Positioning the Wall Game

Choose a clear and flat area of wall free of cables and pipework.

Care & Maintenance

Inspect the wall game before each use, be aware of loose or missing parts and screws.

- 1** Mark mounting holes by placing each panel in position and use the pre-drilled holes in each panel to mark the drill locations on the wall. Install panels in numerical order as shown.



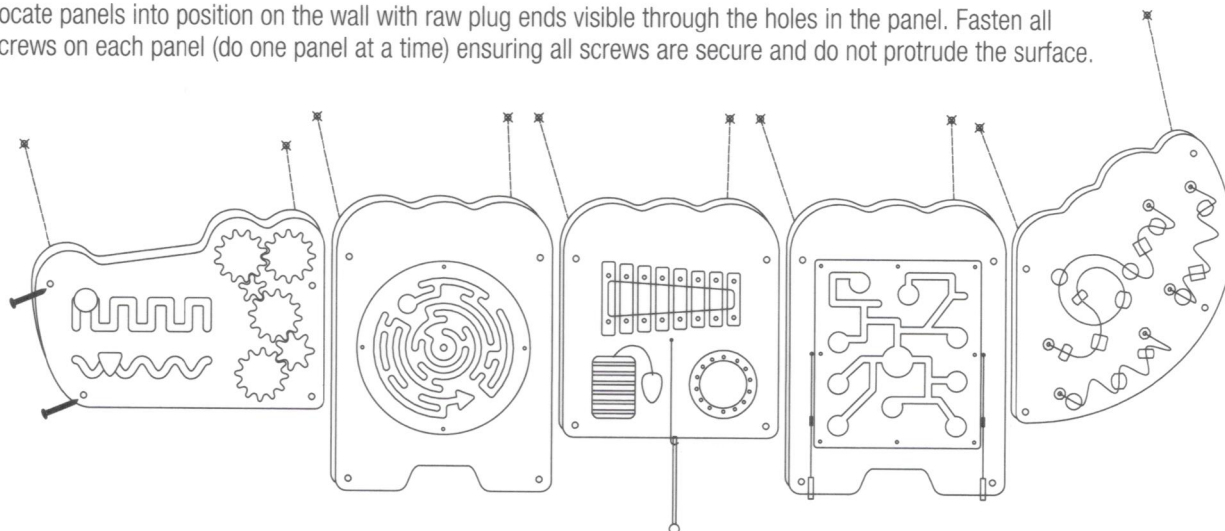
- 2** Drill the holes on the wall using an 8mm drill bit. Drill a hole 45mm in depth.



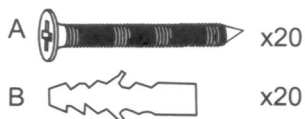
- 3** Insert the raw plugs into the holes



- 4** Locate panels into position on the wall with raw plug ends visible through the holes in the panel. Fasten all screws on each panel (do one panel at a time) ensuring all screws are secure and do not protrude the surface.



Included Hardware



WARNING:

Not suitable for children under 18 months. Long cord/Long chain - Strangulation hazard.
This toy is required to be assembled by adults only. It may contain potential choking hazards, small parts or sharp points before assembly.

www.vigatoys.com

Incorrect assembly may cause injury to children. Screws may rust over time, please inspect all the screws periodically. Do not use close to the ear! Misuse may cause damage to hearing.