

**REF**

Wheeleo-v2  
Wheeleo-v2/9005  
Wheeleo-v2/5009

**Product Name**

Wheeleo White  
Wheeleo Black  
Wheeleo Blue



Produced with love in Belgium



NOTICE D'UTILISATION	FR	2
GEBRUIKAANWIJZING	NL	7
GEBRAUCHSANWEISUNG	DE	12
USER MANUAL	EN	17
MANUALE D'USO	IT	22
MANUAL DE INSTRUCCIONES	ES	27
MANUAL DE UTILIZAÇÃO	PT	32
ΟΔΗΓΙΕΣ ΧΡΗΣΗΣ	GR	37
تعليمات الاستخدام	AR	42
BRUGSANVISNING	DK	47

More languages on

<https://www.wheeleo.eu/operating-instructions/>



# Wheeleo<sup>®</sup>

One hand for autonomy

# Senior and modern... Incompatible ?



**Wheeleo®**  
One hand for your autonomy

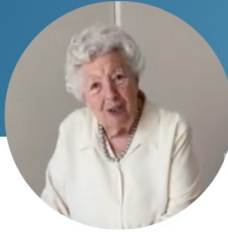
**Wheeleo®**,  
Your new-generation  
walking companion that  
ensures stability and  
safety throughout  
your day.



Clinical  
trial

*Test me !*

# WHAT DO USERS THINK?



"It's the **best indoor rollator**. The Wheeleo® is compact and space-saving compared to my classic rollator. It moves **effortlessly** in all directions."

**Marie-Paule C.**  
93 year old user



"I **feel safer** with the Wheeleo®. If I didn't have the Wheeleo®, I would lose my autonomy, I would surely be in my chair not knowing how to move around."

**Vincent Durant**  
37 year old hemiplegic



## Smart design

Compact. Convertible. Elegant.

Our design allows **easy transportation** and has a **modern look**. No stigma, just a next-generation mobility aid



## One hand

Experience full support, without compromising your freedom. Always one hand free for daily activities.



## 4 points of contact

4 wheels that keep you **connected to the ground at all times**.

Experience the stability of a rollator's 4 legs, in the shape of a cane.



## Dynamic braking

The Wheelleo® has no brakes, and more importantly, doesn't need brakes. The device is **easily controlled**, enabling the person to stop and walk at a desired pace.



## 1. General

InnoRehab would like to thank you for your purchase of the Wheeleo®. This user manual contains information on the correct use of the product and important safety advice.



Please read the information contained in this manual carefully before using the walking cane. Please consult a healthcare professional in order to ensure that the cane is suitable for your needs.

Please contact your stockist for additional information, advice or assistance.

## 2. Intended standard use

The Wheeleo® is a hand-held device to aid mobility for people with walking difficulties.

## 3. Contraindications



Not to be used by people whose weight exceeds 120 kg.  
Not to be used for any purpose other than that specified in these instructions.

## 4. Declaration of conformity

Wheeleo® is a walking aid medical device that complies with the applicable provisions described in the Medical Equipment Regulation (EU) 2017/745.

## 5. Warnings

Read the whole of this manual carefully before using the Wheeleo®.

Check that the Wheeleo® is supplied complete. If it is to be stored for a lengthy period, keep the Wheeleo® wrapped and away from heat and dampness.

The service life of the Wheeleo® is determined by the wear on its component parts.

The Wheeleo is designed for use on flat ground and relatively smooth ground. The castors must be able to roll freely.

InnoRehab does not accept any liability for the consequences of improper use of the product, a lack of maintenance, or for any modifications made to the Wheeleo® structure.



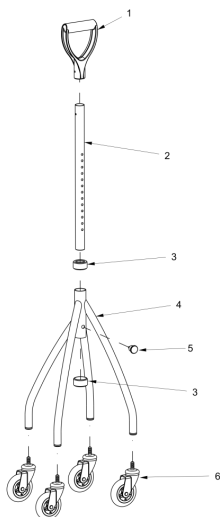
In the event of a change in performance or malfunction of the Wheeleo, InnoRehab should be contacted and the product should not be used again until the problem is resolved.

## 6. Description

### a. Wheeleo®

The Wheeleo® is made of steel with a paint finish. It has 4 100mm castors enabling it to turn though 360°. It incorporates a mechanism for rapid adjustment of the handle height. The

height of the cane can be adjusted in 2 cm steps between 77,5 cm and 101,5 cm. The Wheeleo® allows the user to walk quickly, stably and comfortably. The maximum weight of the user is 120 kg.



N°	Description
1	Handle
2	Sliding tube
3	Anneau finition
4	Structure of the foot
5	Index Plunger
6	Castor

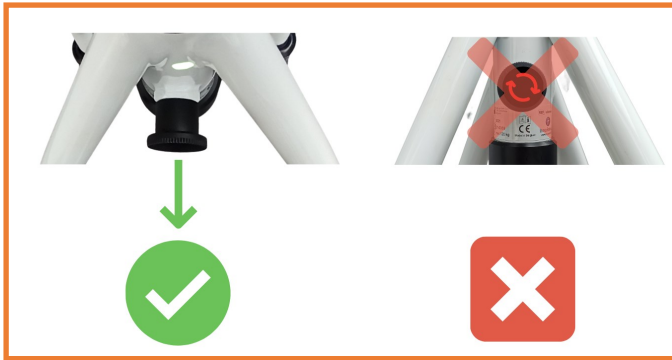
EN

### b. Adjustment of the height

To adjust the height of the handle, grip the stopper in three fingers and pull out, then use the other hand to slide the sliding tube over the central tube to connect with a higher or lower adjustment hole. Release the stopper in order to allow it to re-engage. Ensure that the holes in the sliding tube are in line with the adjustment hole. If you are not able to do this alone, ask someone to help you. A healthcare professional can advise on the ideal height for your requirements.

For a more occasional balance aid, an adjustment higher than the hip is recommended. For a 'supportive' type of aid, adjusting the handle to the same height as the bend in your wrist may be more comfortable. In all cases, a professional can advise you on the ideal height for your needs.

Setting

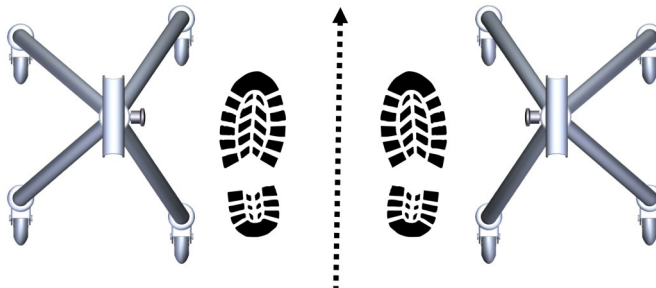


Pull in the axis of the adjustment plug !

Do not unscrew !

**c. Use in the right or left hand**

No adjustment to the handle position is necessary in order to use the Wheeleo® in the right or left hand. Just turn the Wheeleo® round. The handle is symmetrical. On the other hand, the Wheeleo® is not completely symmetrical. It has a narrow side and a wider side. The wider side and the indexing button must be closest to the user. The green dot must be visible to the user.



Left hand

Right hand

## 7. Before use

- Check that the structure of the Wheeleo® is not damaged in order to ensure it is completely safe to use.
- Check that the castors are firmly fixed and roll smoothly. The castors must also swivel freely through 360°.
- It is advisable to be accompanied by a professional when you first use the Wheeleo® in order to maximise the benefit.
- It is advisable to modify the location where the Wheeleo® is used in order to reduce the risk of falls. The floor must be as smooth as possible. It is advisable to remove rugs.
- Check that it is the correct height and that the adjustment mechanism is correctly positioned.

## 8. Warnings for correct use



- Do not use if your weight exceeds 120 kg.
- Risk of tipping: keep the Wheeleo® facing in the right direction (section 6.c) and leave the casters free to move. The Wheeleo is not suitable for floors with excessively uneven surfaces that prevent the castors from rolling smoothly. For example (non-exhaustive list) carpets, gravel, paving stones, electric cables, grass, etc.
- Danger of tipping over when all 4 wheels of the Wheeleo® are off the ground. Do not tilt the Wheeleo® more than 5° outwards or 2° inwards.
- Avoid using the Wheeleo® on wet surfaces. Water can damage the bearings and prevent the wheels from turning.
- Avoid using the Wheeleo® on dirty surfaces (sand, dust, etc.). Dirt can also prevent the wheels from turning properly.
- If use of the Wheeleo® causes problems (allergic reaction or pain), stop using it and contact a healthcare professional.
- Risk of trapping the fingers: do not insert fingers into the holes in the handle.
- Any serious incident with the device should be reported to the manufacturer and to the competent authority of the Member State in which the user and/or patient is established.

## 9. Maintenance

The Wheeleo® was verified and certified with the label “CE – Medical Device Class 1” when launched on the market. For the user’s safety, it is recommended that you have the device checked by the manufacturer or an approved laboratory every 2 years. In the event of repair, only use original equipment spare parts or accessories.

On a regular basis and especially if you use the Wheeleo® on uneven ground, which can cause vibrations, check that the wheels are still screwed tight. If necessary, tighten them again (14 mm wrench). You can add threadlocker to reinforce the tightening. For more information on maintenance, visit <http://www.wheeleo.be/registration>

## 10. Cleaning and disinfection

- a. **Cleaning:** Use a cloth to remove dust. If necessary, add a small amount of detergent to remove stubborn dirt. Dry it completely before use.
- b. **Disinfection:** If you need to disinfect the equipment, use a disinfectant cleaner such as hydroalcoholic gel.

**Warning: Do not use acids, alkalis or solvents such as acetone.**

## 11. Disposal



Do not dispose of the device in normal refuse bins. Dispose of the Wheeleo® at an appropriate recycling centre.

# Product Registration and Maintenance :

Online: <http://www.wheeleo.be/registration>



For registration, you can send the document on page 53 completed

**Connect to the Wheeleo® community to share your experiences and get advice from other users!**



@wheeleo



@wheeleo.be



@wheeleo

**#onehandforautonomy**

## 1. Generelt

InnoRehab vil gerne takke dig for dit køb af Wheeleo®. Denne brugsanvisning indeholder information om korrekt brug af produktet og vigtige sikkerhedsråd.



Læs venligst oplysningerne i denne manual omhyggeligt, før du bruger Wheeleo®. Kontakt venligst en sundhedspersonale for at sikre, at Wheeleo® er egnet til dine behov.

Kontakt din forhandler for yderligere information, rådgivning eller assistance.

## 2. Forventet standardbrug

Wheeleo® er en håndholdt enhed til at hjælpe med mobilitet for personer med gangbesvær.

## 3. Kontraindikationer



Må ikke anvendes af personer, hvis vægt overstiger 120 kg.  
Må ikke anvendes til andre formål end dem, der er angivet i disse instruktioner.

## 4. Overensstemmelseserklæring

Wheeleo® er et hjælpemiddel til gang, der overholder de relevante bestemmelser beskrevet i Medicinsk Udstyrsforordning (EU) 2017/745.

## 5. Advarsler

Læs hele denne manual omhyggeligt, før du bruger Wheeleo®.

Kontrollér, at Wheeleo® er leveres i fuldstændig stand. Hvis den skal opbevares i længere tid, skal Wheeleo® pakkes ind og holdes væk fra varme og fugt. Wheeleo®'s levetid bestemmes af slid på dens komponentdele.

Wheeleo er designet til brug på fladt underlag og relativt jævnt underlag. Hjulene skal kunne rulle frit. InnoRehab påtager sig intet ansvar for konsekvenserne af forkert brug af produktet, manglende vedligeholdelse eller for modificeringer foretaget på Wheeleo®'s struktur.



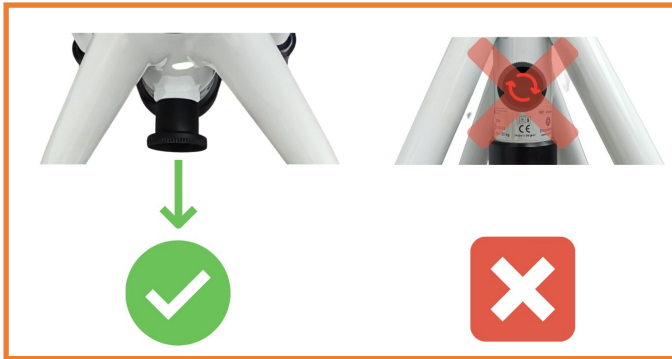
I tilfælde af ændring i ydeevnen eller funktionsfejl på Wheeleo®, bør InnoRehab kontaktes, og produktet bør ikke bruges igen, indtil problemet er løst.

## 6. Beskrivelse

### a. Wheeleo®

Wheeleo® er lavet af stål med en lakeret finish. Den har 4 hjul på 100 mm, der gør det muligt at dreje 360°. Den har også en mekanisme til hurtig justering af højden på håndtaget. Højden på stokken kan justeres i trin på 2 cm mellem 77,5 cm og

## Indstilling

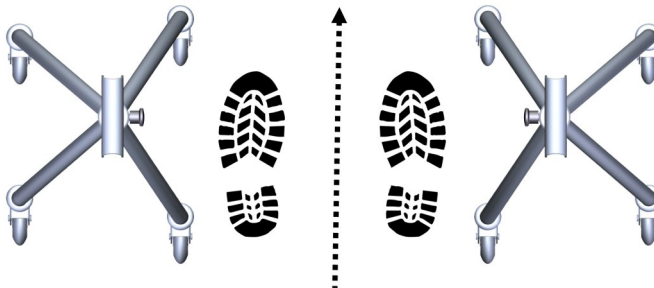


Træk i aksen af justeringspinden!

Skru ikke af!

**c. Brug med højre eller venstre hånd**

Der kræves ingen justering af håndtagspositionen for at bruge Wheeleo® med højre eller venstre hånd. Bare drej Wheeleo® rundt. Håndtaget er symmetrisk. På den anden side er Wheeleo® ikke helt symmetrisk. Den har en smal side og en bredere side. Den bredere side og indekseringsknappen skal være tættest på brugeren. Den grønne prik skal være synlig for brugeren.



Venstre hånd

Højre hånd

## 7. Før brug

- Kontrollér, at Wheeleo®'s struktur ikke er beskadiget for at sikre, at den er helt sikker at bruge.
- Kontrollér, at hjulene er fast monteret og ruller glat. Hjulene skal også kunne dreje frit 360°.
- Det er rådet at være i følgeskab med en professionel, når du første gang bruger Wheeleo®, for at maksimere fordelene.
- Det er rådet at ændre stedet, hvor Wheeleo® bruges, for at reducere risikoen for fald. Gulvet skal være så glat som muligt. Det er en god idé at fjerne tæpper.
- Kontrollér, at det er den korrekte højde, og at justeringsmekanismen er korrekt positioneret.

## 8. Advarsler for korrekt brug

- Brug ikke, hvis din vægt overstiger 120 kg.
- Risiko for væltning: hold Wheeleo® rettet i den rigtige retning (sektion 6.c) og lad hjulene kunne bevæge sig frit. Wheeleo® er ikke egnet til gulve med overdrevent ujævne overflader, der forhindrer hjulene i at rulle glat. For eksempel (ikke-udtømmende liste) tæpper, grus, brosten, elektriske kabler, græs osv.
- Fare for væltning, når alle 4 hjul på Wheeleo® er i luften. Vip ikke Wheeleo® mere end 5° udad eller 2° indad.
- Undgå at bruge Wheeleo® på våde overflader. Vand kan beskadige lejerne og forhindre hjulene i at dreje.
- Undgå at bruge Wheeleo® på snavsede overflader (sand, støv osv.). Snavs kan også forhindre hjulene i at dreje ordentligt.
- Hvis brugen af Wheeleo® forårsager problemer (allergisk reaktion eller smerte), stop med at bruge den og kontakt sundhedspersonale.
- Fare for at klemme fingrene: Stik ikke fingrene ind i hullerne i håndtaget.
- Eventuelle alvorlige hændelser med enheden skal rapporteres til producenten og til myndighederne i det medlemsland, hvor brugeren og/eller patienten er hjemmehørende.



## 9. Vedligeholdelse

Wheeleo® blev verificeret og certificeret med mærket "CE - Medicinsk Udstyr Klasse 1", da den blev lanceret på markedet. Af hensyn til brugerens sikkerhed anbefales det at få enheden kontrolleret af producenten eller et godkendt laboratorium hvert 2. år. Ved reparation skal der kun bruges originale reservedele eller tilbehør. Det skal gøres regelmæssigt, og dette især hvis du bruger Wheeleo® på ujævnt underlag, der kan forårsage vibrationer, skal du kontrollere, at hjulene stadig er fast skruet. Stram dem om nødvendigt igen (14 mm topnøgle). Du kan tilføje gevindlås for at forstærke spændingen. For mere information om vedligeholdelse, besøg <http://www.wheeleo.be/registration>

## 10. Rengøring og desinfektion

- a. **Rengøring:** Brug en klud til at fjerne støv. Hvis nødvendigt, tilsæt en lille mængde vaskemiddel for at fjerne genstridig snavs. Tør den helt før brug.
- b. **Desinfektion:** Hvis du har brug for at desinficere udstyret, skal du bruge et desinfektionsmiddel som hydroalkoholisk gel.

**Advarsel: Brug ikke syrer, alkalier eller opløsningsmidler som acetone.**

## 11. Bortskaffelse



Smid ikke enheden i almindelige affaldscontainere. Smid Wheeleo® på et passende genbrugscenter.

# Produktregistrering og vedligeholdelse :

Online: <http://www.wheeleo.be/registration>



For registrering kan du sende det udfyldte dokument på side 53

**Bliv en del af Wheeleo®-samfundet for at dele dine oplevelser og få rådgivning fra andre brugere!**



@wheeleo



@wheeleo.be



@wheeleo

**#onehandforautonomy**

**CERTIFICAT DE GARANTIE / GARANTIECERTIFICAAT / GARANTIE-ZERTIFIKAT /  
WARRANTY CERTIFICATE / CERTIFICATO DI GARANZIA / CERTIFICADO DE GARAN-  
TÍA / GARANTIBEVIS / ΠΙΣΤΟΠΟΙΗΤΙΚΟ ΕΓΓΥΗΣΗΣ / شهادة الضمان**

Produit / Product / Produkt / Product / Prodotto / Producto / Produto / Προϊόν / المنتج :



REF.....

SN :.....

Date d'achat / Aankoopdatum / Kaufdatum / Date of buying / Data di acquisto / Fecha de compra / Data de compra /  
Ημερομηνία αγοράς / تاريخ الشراء : .....

Vendeur / Wederverkoper / Verkäufer / Reseller / Venditore / Vendedor / Vendedor / Προμηθευτής / الموزع :  
.....

Adresse du vendeur / Adres wederverkoper / Adresse des Verkäufers / Reseller's adress / Indirizzo del venditore / Direc-  
ción del vendedor / Morada do vendedor/ Διεύθυνση προμηθευτή / عنوان البائع :  
.....

Acheteur / Aankoper / Käufer / Buyer / Acquirente / Comprador / Comprador / Αγοραστής / المشتري :  
.....

Adresse de l'acheteur / Adres aankoper / Adresse des Käufers / Buyer's adress / Indirizzo dell'acquirente / Dirección del  
comprador / Morada do comprador / Διεύθυνση αγοραστή / عنوان المشتري :  
.....

Email / E-mail / E-Mail / E-mail / Email / Correo electrónico / E-mail / Email / عنوان البريد الإلكتروني :  
.....@.....



A registered Trademark by InnoRehab SRL

Avenue des Combattants, 93a | 1340 Ottignies | Belgium

+32 (0) 479 09 08 03 | [info@wheeleo.eu](mailto:info@wheeleo.eu) | [www.wheeleo.eu](http://www.wheeleo.eu)



Enregistrement produit / Productregistratie / Produktregistrierung / Product  
Registration / Registrazione del prodotto / Registro del producto / Registo do  
produto / Εγγραφή προϊόντος / Registrering af produkter / تسجيل المنتج :

<http://www.wheeleo.eu/registration>





# Wheeleo<sup>®</sup>

One hand for autonomy

**Connect to the Wheeleo<sup>®</sup>  
community and discover  
beautiful stories!**



@wheeleo



@wheeleo.be



@wheeleo



Wheeleo<sup>®</sup>

**#onehandforautonomy**

**[www.wheeleo.eu](http://www.wheeleo.eu)**



**SCAN ME**