

User manual

topolino smart

NE

Please read this user manual carefully prior to installation, use and maintenance for your own safety and in order to avoid damages on your system.

Konformitätserklärung

Declaration of conformity

Wir erklären in alleiniger Verantwortung für alle unsere Systeme, dass diese mit den folgenden Normen oder normativen Dokumenten übereinstimmen.

We declare under our sole responsibility that the systems, which have been brought into the market by us, meet the requirements of the following directives.

topolino smart

**Richtlinie 93/42/EWG
des Rates vom 14. Juni 1993 über Medizinprodukte
Risikoklasse I nach Anhang IX Regel 12
CE Konformität nach Anhang VII
und
RoHS II (EG Richtlinie 2011/65/EU)**

***Council directive 93/42/EEC
of 14th June 1993 concerning medical devices
risk class I according to Annex IX standard 12
CE conformity of Annex VII
and
RoHS II (Council directive 2011/65/EEC)***

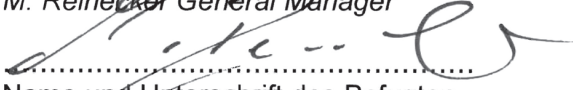
Die CE– Kennzeichnung auf dem Gerät dokumentiert diese Übereinstimmung.
The CE mark on the system points out this accordance.

Alsbach-Hähnlein,

08.10.2015

.....
Ort und Datum der Ausstellung
Place and date of issue

M. Reinecker Geschäftsführer
M. Reinecker General Manager


.....
Name und Unterschrift des Befugten
Name and signature of the authorized person

Contents

I. General information	6
Notes on the electromagnetic compatibility (EMC)	6
Storage of the user manual	6
Product description	6
Medical device	7
Purpose	7
Life span of product	7
Safety advice	7
Combination with other products	7
Precautions by alteration of the performance of the system	7
Reinstatement and installation	7
Cleaning of the system	8
Special advice for transport and storage	8
Disposal of the unit according to EU directive 2002/96/EEC	8
Power supply	8
Safety instructions	9
II. Instructions for the camera reading system topolino smart	10
Scope of delivery	10
Accessories (as an option)	10
Setting up of the system	10
Connection of unit	12
VGA-connection	12
USB-connection	12
Description of the operating-elements	13
Control panel - top side of the device	13
Brightness	13
Saturation and contrast	13
Colour mode	14
Artificial colours	14
Resolution	14
Power plug on/ off	14
Saving of the adjustments last used	14
Control elements on the top of the camera block	15
Autofocus (AF)	15
Overview mode	15
Zoom + / -	15
Mirror image	15

Start-up the camera reading system	16
Mains operation	16
Power on	16
Power off	16
Automatic save regulation for the device set-up	16
Replacement of lighting	16
Automatic switching from mains operation to rechargeable battery operation.....	16
Important note	16
Handling the rechargeable battery	17
Replace the rechargeable battery	17
Battery operation	17
Charging the rechargeable battery.....	17
Operating and charging times	17
Liability for battery defects.....	17
Switching from reading to distance mode	18
Position reading camera.....	18
Distance Viewing	18
Using the camera with a CRT or TFT screen	19
Using the camera system on a computer or notebook	19
Connecting topolino smart to a computer	19
Installation of the software on a PC or notebook	20
Operating of the system through the topolino-software	24
Description of the software- menu bar	24
Description of the toolbar	26
Technical Data	27
Warranty Information.....	28
Notes	29

I. General information

**Important notes on the operation of the camera reading system smart!
Please read them carefully prior to the operation of the camera reading system!**

Notes on the electromagnetic compatibility (EMC)

This camera reading system is suited for use in all set-ups including the domicile that are connected directly to a public power supply for buildings with residential purposes.

This camera reading system is designed for the use in the indicated electromagnetic environment. The user should ensure the use in the indicated environment.

This camera reading system operates on HF-Energy exclusively for its own function. Therefore the emitted interference of high frequency disturbances is very low and the interference with other appliances operated close-by is improbable. When operating the camera reading system simultaneously with other systems, however, the possibility of disturbances of the system or other systems should not be neglected.

For this reason it should be ensured that the system is not placed directly beside or on top of another system. If the set-up of this system in the proximity of medical, measuring devices cannot be avoided, the operator of these devices has to be informed that it is necessary to observe the performance of the system to control the conventional use of the system in the chosen set-up.

Electronic devices are sensitive towards electric discharge and towards high frequency electromagnetic fields.

Attention: In order to avoid high frequency disturbances the operator should respect a minimum distance of one meter to portable and mobile HF-telecommunication devices.

The device may not be used in the patients environment.

Storage of the user manual

The user manual is an essential part of your camera reading system. Please keep the book in a safe place for future reference.

Product description

topolino smart is an opto-electronic camera reading system, which magnifies text and pictures. It may be used permanently for private and professional appliance. The text or pictures are being captured by the integrated camera and then displayed on a directly connected VGA, desktop, or notebook monitor.

- space saving reading- and distance viewing camera in HD quality
- dimmable lights and battery operation
- automatic memory of reading- and distance viewing mode
- Split screen function (PC picture and reading/distance viewing camera picture will be displayed simultaneously on a monitor.

Medical device

This camera reading system is classified as a Medical Device, class I according to 93/42/EEC, annexe IX, standard 12. For the distribution to countries outside the EU the respective country-specific guidelines have to be regarded.

Purpose

This opto-electronic camera reading system is a medical device to assist with the reading and magnifying of printed text and images. Visually impaired people can compensate for their loss of visual acuity by using this device.

Life span of product

Seven years from the date of invoice (ex Reinecker). According to EEC the supplier of medical devices is obliged to define the life span of a product.

Note: The mentioned life span does not reflect the complete life span of the topolino smart. It is rather an indication on when the product might be obsolete and substitution might be recommended due to new product developments.

Safety advice

topolino smart has to be installed in closed and dry rooms only. Do not plug topolino smart into an electrical circuit that is also being used for any life sustaining or support systems. The device may not be used in the patients environment.

This device should not be operated in explosion-endangered environments. This opto-electronic device should only be installed in conjunction with modern electrical circuitry. It is a device of protection class II. The openings in the casing ensure optimum cooling and must not be covered.

Combination with other products

Warning: This camera reading system must not be located directly beside, next or on top of another medical device. If the device is used near another electrical device, monitor the other device to ensure that it is working properly.

In case of doubt please contact Reinecker Vision GmbH or any licensed distribution partner.

Precautions by alteration of the performance of the system

Stop using the reading device if technical features or performances should change. Switch the device off and disconnect the power supply from the mains wall socket. Refer directly to your dealer or to Reinecker Vision GmbH Service Center.

Reinstatement and installation

This device may be technically maintained and reconditioned by Reinecker Vision GmbH only or by an authorized technician. Reinstatement may only take place after the system has been cleaned and safety checked.

Cleaning of the system

- topolino smart has to be disconnected from the power supply before cleaning.
- Clean the system with a slightly damp cloth and a mild household detergent.
- Interior of device must NOT come in contact with liquids.

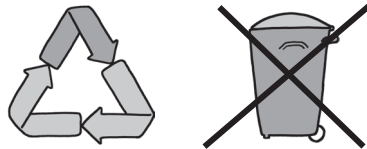
Special advice for transport and storage

For reasons of safety, the unit must only be transported and stored in the original packing. The unit must be stored in dry and closed rooms in the original packing. The following conditions for transport and storage have to be respected:

- Air pressure 700 - 1000 hPa
- Temperature range +5° to + 50°
- Relative air humidity 30% to 80%

Disposal of the unit according to EU directive 2002/96/EEC

topolino smart contains of electronic components. In order to avoid damage to the environment, the country-specific rules have to be respected.



Power supply

Only use the original power supply which is included in the delivery by Reinecker Vision GmbH.

Caution: The use of any other equipment might lead to an increased electromagnetic emission and to a product damage.

Safety instructions

Please follow the following safety instructions:

1. Do not plug the AC adapter into a faulty electrical outlet. Doing so may cause electrical shock or fire.
2. Do not touch the AC adapter with wet hands.
3. Only use the original power supply which is included in the delivery by Reinecker Vision GmbH. The use of any other equipment might lead to a product damage.
4. Only use the original battery which is included in the delivery by Reinecker Vision GmbH. The use of any other equipment might lead to a product damage.
5. Do not expose the system direct sunlight or to very hot or cold environment, as this would harm the picture quality.
6. Do not use this device below +5°C or above +40°C.
7. No liquids must reach the interior of the system. Only use the device in a dry environment.
8. The device may not be used next to medical devices (patients environment).
9. Do not lean on the system and do not put heavy objects on it as the system could be damaged.
10. Do not try to repair or to dismantle the system by your own. This would automatically void the warranty. If you need any technical assistance please get in contact with the local distributor or with Reinecker Vision GmbH.
11. Always switch OFF the system and disconnect it from the power supply before cleaning it. Only use a soft and slightly damped cloth. Only use a mild household detergent. Do not use alcohol containing or strong detergents.

II. Instructions for the camera reading system topolino smart

Scope of delivery

- Basic system topolino smart
- Carrier bag including shoulder strap
- Power supply unit 12V DC 2,5A
- Country adapters
- USB-cable
- Software
- User manual
- Information sheet for repair cases

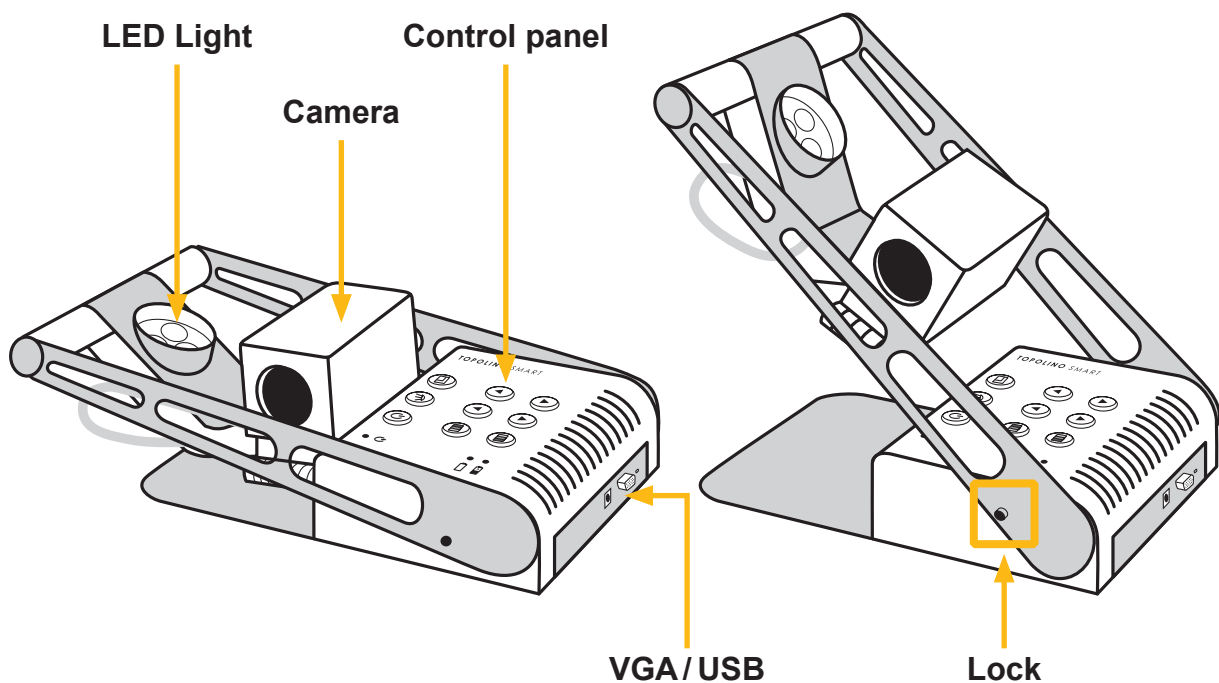
Accessories (as an option)

- xy-table for more reading comfort

Setting up of the system

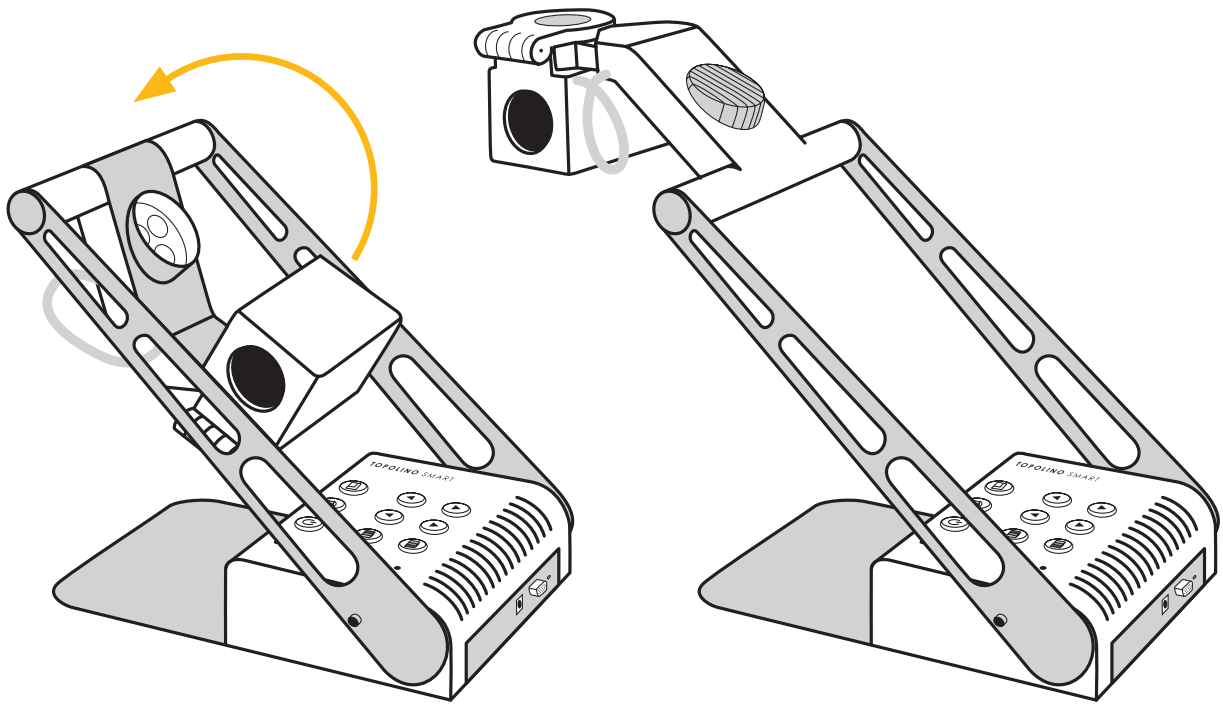
Your system will normally be unpacked and set up by the supplier's representative. If you have not purchased a Videomatic stand that fits to the product you must provide a solid surface for the system with sufficient surface area.

Set up your topolino smart as described below:

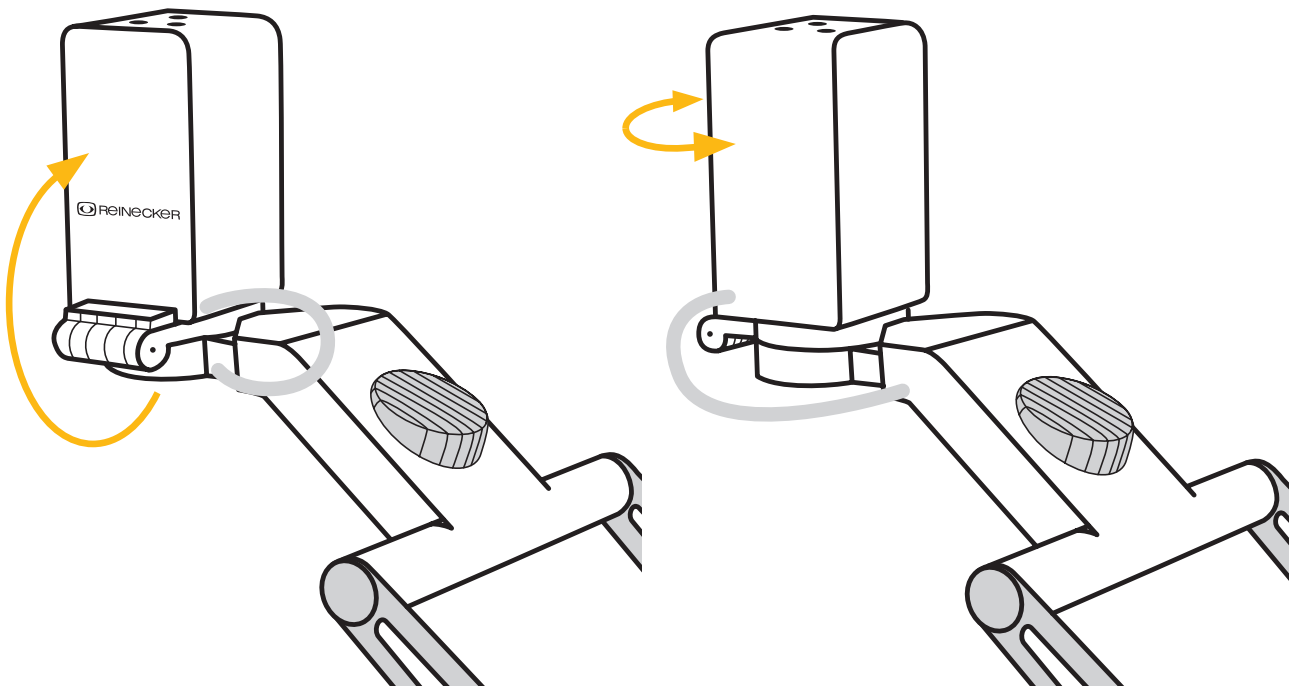


Folded topolino smart in transport position

Pull up the camera stand until it snaps in place and the arm is completely locked.



Swivel camera head by 180° above.



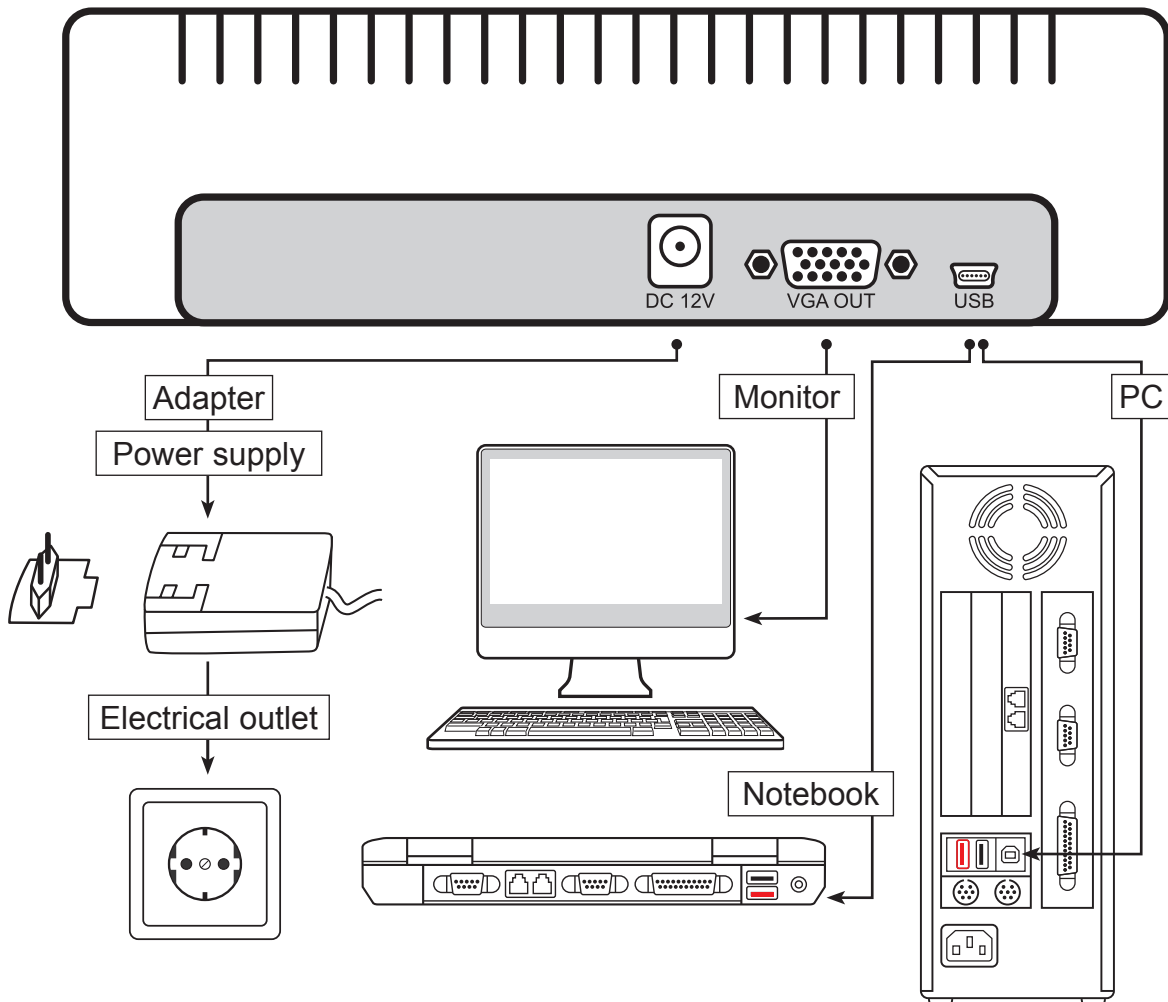
Using the round cross bar as the pivot, pull the camera head and LED light arm up and towards yourself until the LED lights are pointing down towards the table.
At the hinge by the rectangular camera head, bring the camera into the upright position. Then twist the camera so that the hinge and the Reinecker logo are facing the user.

Connection of unit

Connect the power supply to a mains wall socket and plug the adapter end of the cord into the DC12V power supply socket located on the base of the topolino smart.

Note: The delivered power cable is to be used exclusively in connection with the topolino smart.

Once the device is plugged in, it is ready to use.



VGA-connection

If you wish to connect your topolino to a VGA monitor, use your own VGA connecting cable and plug it into the back of the base of the topolino smart, in the socket labelled VGA OUT. Then plug the other end into your own VGA monitor.

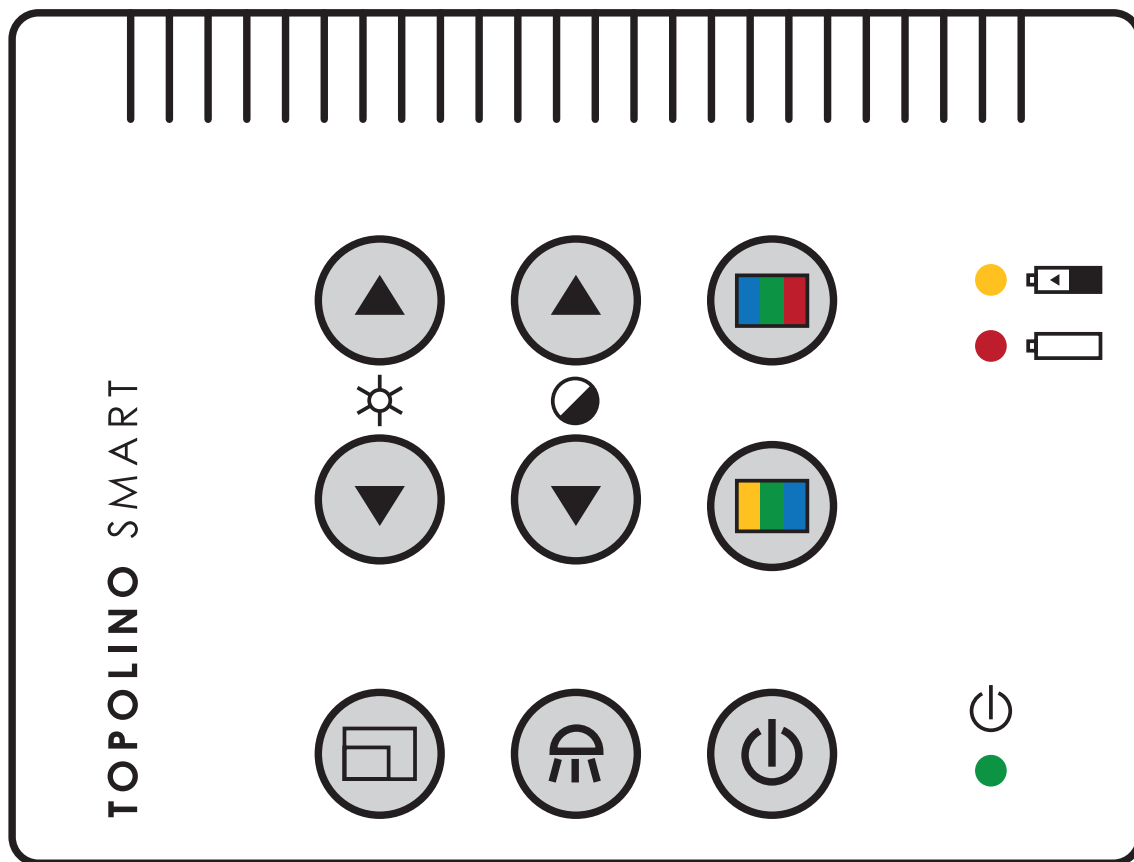
USB-connection

To connect to a PC or laptop (non-Macintosh), use the included USB/mini-USB plug and plug the mini-USB end into the back of the base of the topolino smart, in the socket labelled USB. Then plug the other end into your own PC or laptop.

Attention: Unplug by pulling the plug and not by pulling the cable!

Description of the operating-elements

Control panel - top side of the device



Brightness

By pressing the up and down Brightness keys, you control the brightness of the image (intensity of the illumination).



If both keys are pressed simultaneously in the distance viewing mode, the auto-exposure can be switched on/off:

Auto-Exposure on: depending on the current lighting conditions, the brightness of the camera-image will be adjusted automatically.

Auto-Exposure off: the brightness of the camera-image will no longer adapt automatically to the current lighting conditions.



Saturation and contrast

By pressing the Saturation keys, the contrast of the image changes.



In Full Colour mode, the Saturation buttons will control the intensity of the colours.

In Artificial Colour mode, the Saturation buttons will control the degree of contrast.



Colour mode

This button switches the device between real colour mode and artificial, or false colours.



Artificial colours

Once in Artificial Colour mode, pressing this button will scroll through the different artificial colour choices. There are different combinations of artificial colours available: black/white negative, black/white positive, green/black negative, yellow/black negative, yellow/ blue negative



Resolution

Switching of the screen resolution between 1440 x 900, 1280 x 1024, 1600 x 1200 and 1680 x 1050 pixels.

Note: The resolution adjusted will be displayed at the monitor, once it has been changed.



Illumination

By pressing the illumination button, the illumination will either switch on, off, or be dimmed. The light will turn on automatically when the camera position changes from reading to distance viewing mode.



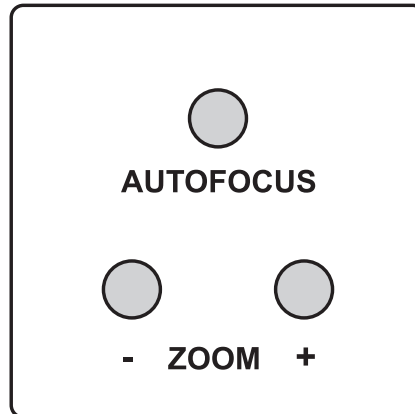
Power plug on/ off

Switches the system on and off.

Saving of the adjustments last used

When turning on topolino smart, you will automatically revert to the last used colour and magnification settings. Topolino smart saves two different settings for the reading and distance viewing modes.

Control elements on the top of the camera block



Autofocus (AF)

By using the Autofocus key, autofocus can be turned ON or OFF. The status of the autofocus function is displayed for approximately 4 seconds at the bottom of the screen. When autofocus is switched ON, the camera will automatically adjust the focus setting.

Overview mode

If you are working with a higher magnification and you do not know which area of the reading material or which part of the room you want to locate, this function will give you an overview of the magnified area.

To activate the overview mode and temporarily zoom out for scanning (either in reading or distance mode), hold down the AF key until „overview mode“ is displayed at the bottom left of the screen and the camera zooms out.

The cross-hair in the middle of the picture serves as a locator for the material you want to magnify. Center the cross hair on the desired viewing object and then release the AF key. The camera will then automatically zoom back in and return to your original magnification setting.

Zoom + / -

The magnification can be increased or decreased by using the keys +/-.

Mirror image

The picture display on the monitor can be changed to operate as if you were looking at a mirror. This is useful if you want to perform a personal task such as shaving or applying makeup. To enter into mirror mode, press and hold down the zoom + and zoom – keys, until the display briefly indicates „mirror ON“. Then, flip the camera up as if you were using the distance mode. Rotate the camera as far as you can back towards you. It cannot rotate back the full circle, so you will have to re-position the base of the unit to get the camera pointing towards the user. For best operation, turn the Autofocus OFF while in mirror mode.

To return to the normal operating state, press and hold down both keys again until the display indicates a sign „mirror OFF“ and the image will be back to its normal operating state.

Start-up the camera reading system

Mains operation

Check if the power adapter is connected to the mains and the power supply socket (12V DC) of the topolino smart.

Power on

Press the on/off button to switch on the device. When the topolino smart and the baseplate is illuminated, you can put a page or an object onto the table.

All the optional settings – for example zoom, colour or brightness- can be adjusted individually.

Power off

Switch off the device with the on/ off button.

Automatic save regulation for the device set-up

When you reset the device all settings used before will be activated again.

Replacement of lighting

The electronic magnifier is equipped with a high power LED Illumination.

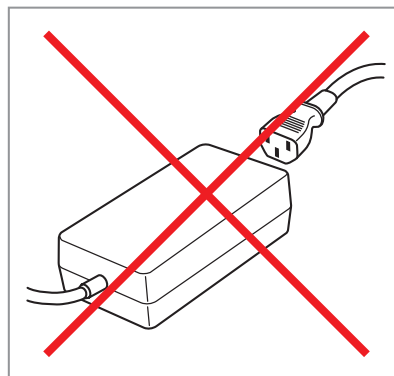
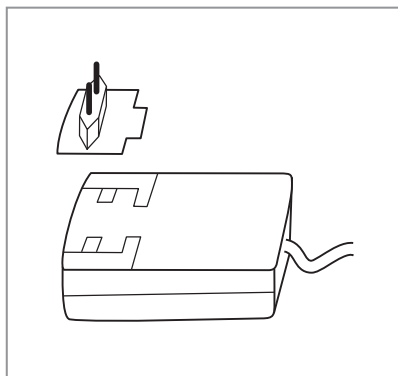
If replacement of the lamp is required it should only be done by a specialist or by Reinecker Vision GmbH.

Automatic switching from mains operation to rechargeable battery operation

As soon as topolino smart is plugged into the electrical outlet, the system switches automatically to electrical power operation even if it had been operating on the battery.

Important note

Please only use the power supply included in the delivery. Use of any other power supply will void the warranty!



Handling the rechargeable battery

Attention: In order to assure a long life span of the rechargeable battery you must follow the instructions for charging and operating the battery:

- The battery is only fully charged once the yellow charging light turns off.
- If topolino smart will not be used for a long time, please charge the battery completely. Even if switched off, topolino smart may discharge. Total discharge might damage the battery.

Replace the rechargeable battery

- The rechargeable battery may only be exchanged by Reinecker Vision GmbH or by an authorized speciality retailer.
- You must only use the original rechargeable battery.
- Replacement batteries can be ordered through Reinecker Vision GmbH.
Article number: 00354002
- The usage of other rechargeable batteries will damage the system. All warranties of defects for topolino smart will then be voided.

Battery operation

Make sure that the power supply is disconnected once the battery has being charged completely.

- press the on/off button to turn the unit on
- permanent red LED: this indicates that the rechargeable batteries will only work for 10 minutes
- flashing red LED: this indicates that the rechargeable batteries will be switched off; you may no longer use the rechargeable battery. They have to be charged again

Charging the rechargeable battery

- permanent red LED
- connect the power adapter with a power outlet
- Switch the unit off or use it without lights (turn the lights off, too)
- Permanent yellow LED: battery is going to be recharged
- Once the battery has been charged, the yellow LED disappears
- topolino smart is ready to being used in battery operation

Operating and charging times

- Operating time with illumination, when the battery is fully charged: approx. 4 hours
- Charging time: approx. 3,5 hours

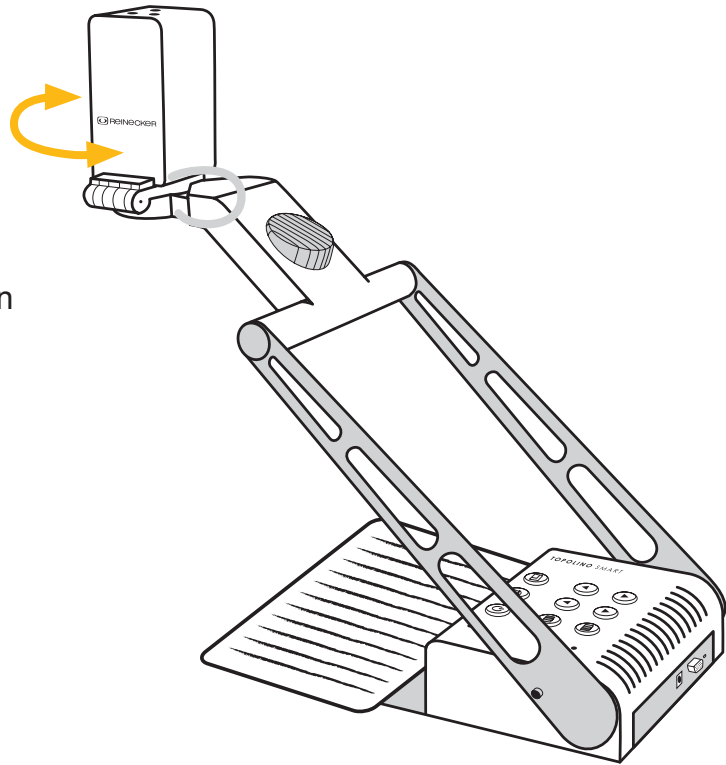
Liability for battery defects

Batteries are subject to natural wear and tear and are therefore not covered by the warranty.

Switching from reading to distance mode

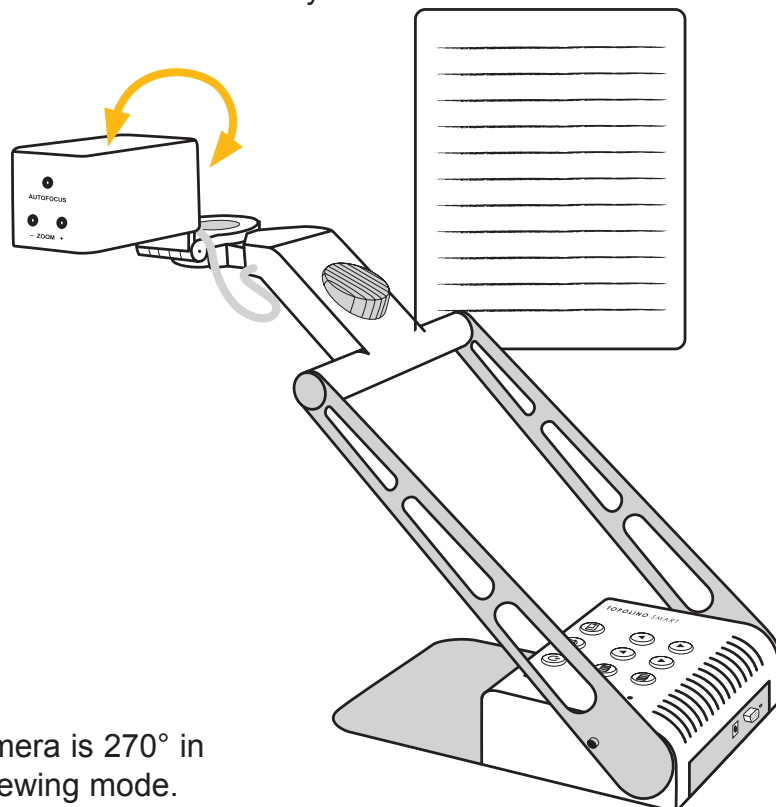
Position reading camera

Pivot the camera head so that zoom buttons are facing up and the Reinecker logo and the camera hinge are facing the user. This will allow you to read any material which you place under the camera. Reading illumination will turn on automatically.



Distance Viewing

Pivot the camera head at the hinges, back towards the user. Stand illumination turns off automatically.



Note:

The swivel range of the camera is 270° in the reading and distance viewing mode.

Using the camera with a CRT or TFT screen

- Install the camera stand as described in „Installation of the system“ on page 10.
- Using your own VGA cable, plug one end of the cable into the CRT or TFT screen and connect the other end to the VGA OUT plug located at the back of topolino smart. Then turn on the screen.
- Turn on your topolino smart and place your reading material underneath the camera. Operate your topolino smart using the buttons located directly on the unit.
- Connect CRT or TFT screen to VGA socket and switch on the screen.

Using the camera system on a computer or notebook

To achieve the optimal image display, the following **minimum requirements** are recommended:

- Processor Intel P4 3 Ghz
- Memory 512 MB RAM
- Drive: CD- or DVD drive
- Graphic card with 32 MB and Overlay
- Operating system Windows XP, Windows 2000, Windows Vista or Windows 7
- Information is transmitted by using the included USB-cable

Connecting topolino smart to a computer

- Install the topolino software as described in the following section.
- Turn on your computer.
- Connect topolino smart to the computer by using the included USB/mini-USB cable. Turn on your topolino smart.
- On your computer, go to „Start\Program\topolino“ to start up the topolino-software. You must turn on your topolino smart before starting the software on your computer.

Now you may view your magnified reading material on the computer monitor and operate the system either using the keys on the topolino device itself or using the installed topolino software.

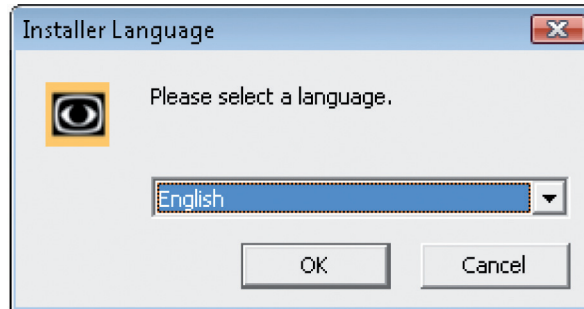
Installation of the software on a PC or notebook

To install the software on your PC or notebook, place the included CD into your computer's CD drive.

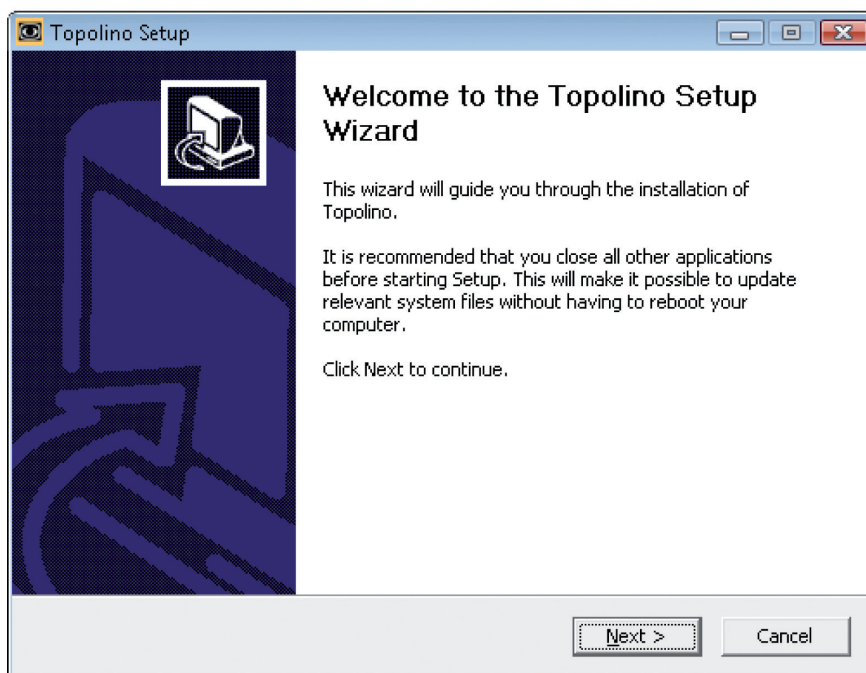
In case the CD does not start automatically, go to your desktop folder and select your CD drive to start "setup.exe".

Note: If a warning window of the manufacturer of this software appears, click „yes“.

To choose the language settings for the installation and the user interface of the software, a window will appear at first.

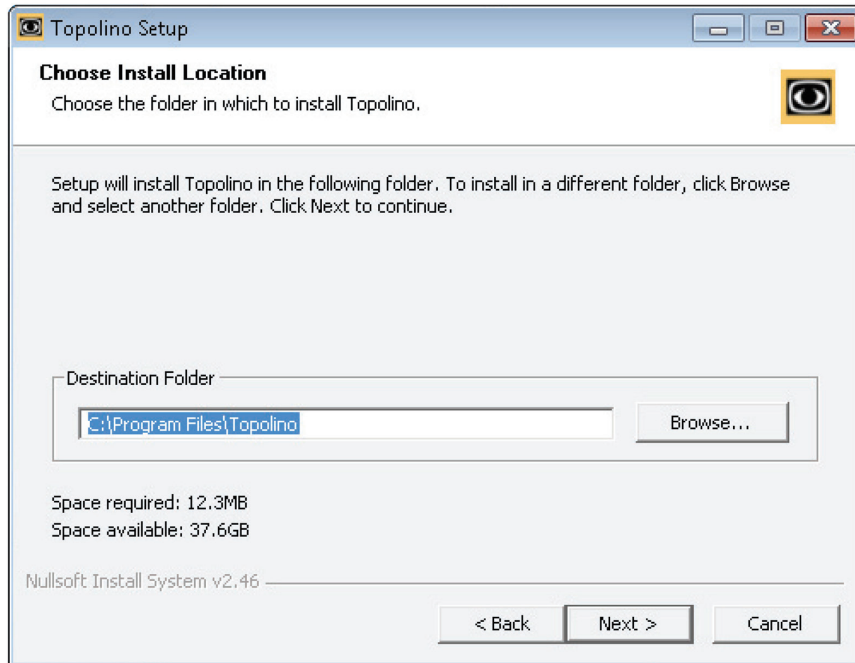


A windows appears to select the appropriate language for installation. Chose your language and confirm "ok". A window of the installation assistant appears. Click "next/continue" to continue with installation.



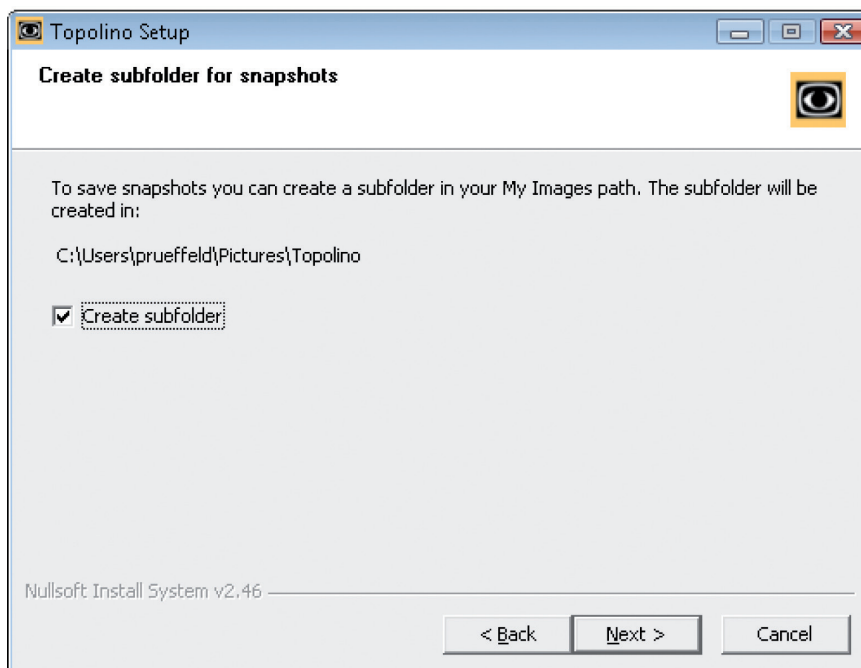
In the next window create the directory where you want to save the program. By default, the directory “C:\Program Files\topolino” will be set up. However, if you wish to install the software into another folder, please click “search” and pick a directory of your choice. To continue installation, click the “next/continue” key.

Note: In the bottom left hand part of the window display, the necessary fixed-disk storage and the available memory is indicated. Please make sure that adequate disk space is available for installation.

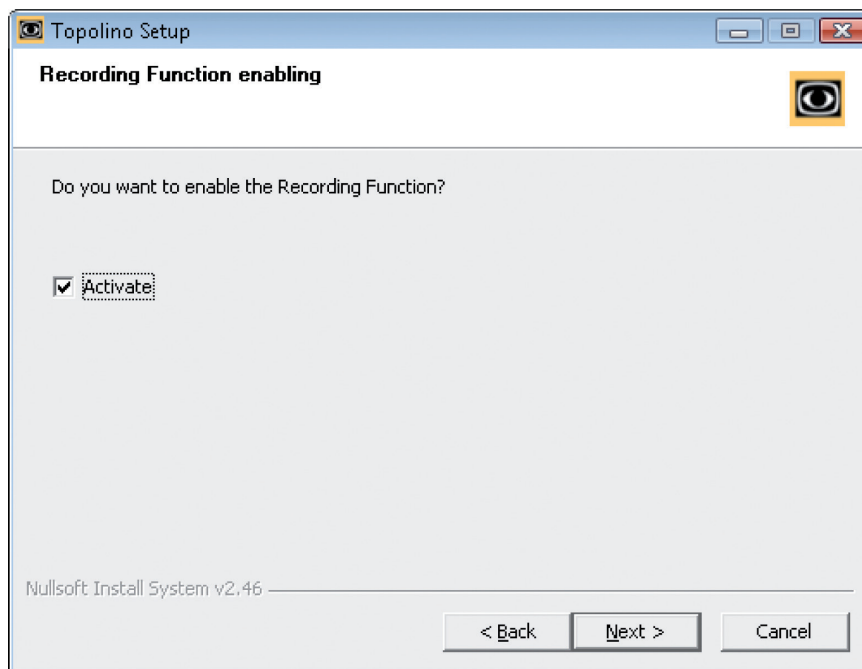


In the next window a new directory is created. This is where you will store any jpg snapshots that you take with topolino. When you select „create a subfolder“, a subdirectory will be created in the standard directory.

To continue installation, click the “next/continue” key.

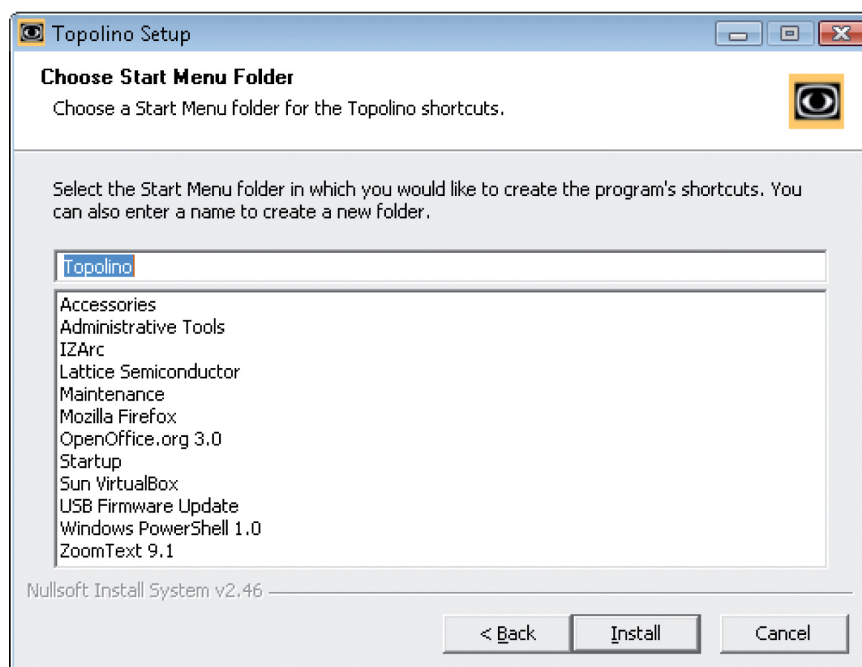


In the next window, you are given the option to record video sequences. To activate this function, select “activate”. To continue installation, click the „continue“ key.



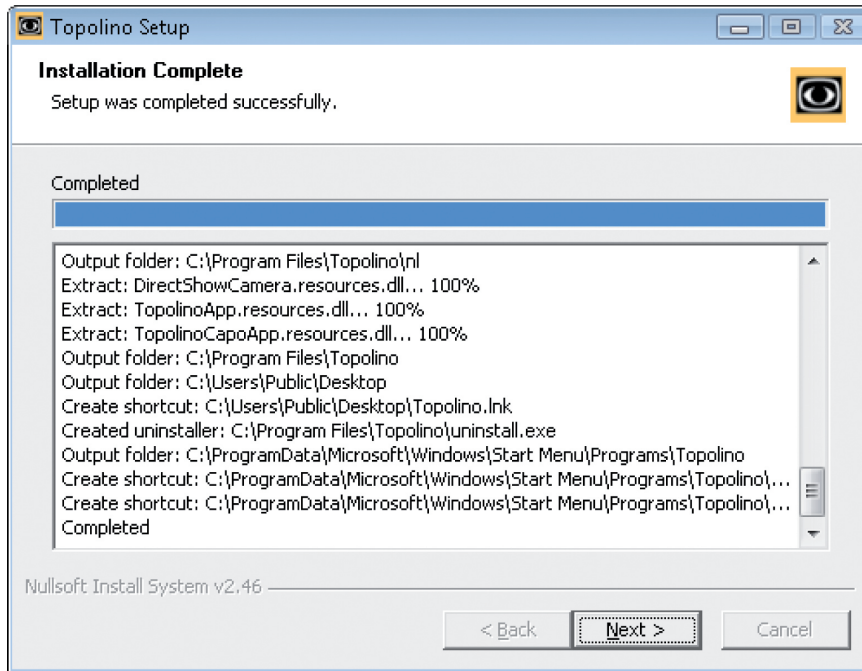
During the next step the name of the start menu folder under Windows XP will be assigned. It is recommended to maintain the name “topolino” in order to avoid any confusion.

To start installation, click “installation”.

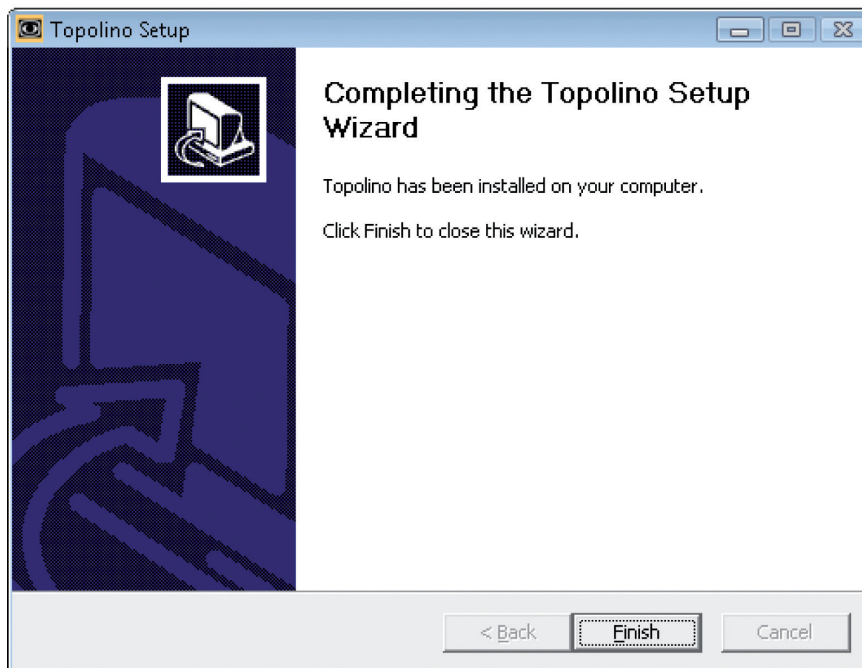


As soon as the installation process is completed, the following confirmation of the completion of the installation is shown.

Click the „continue“ key in order to go to the next step.



Finally finish the installation wizard by clicking “finish”.

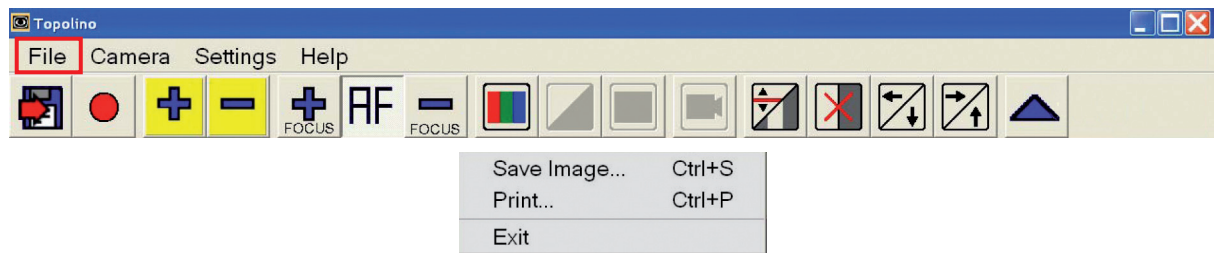


Installation of your topolino-software is now completed and the program can be started and accessed through your window menu bar „Start\Programme\topolino“.

Operating of the system through the topolino-software

Description of the software- menu bar

File

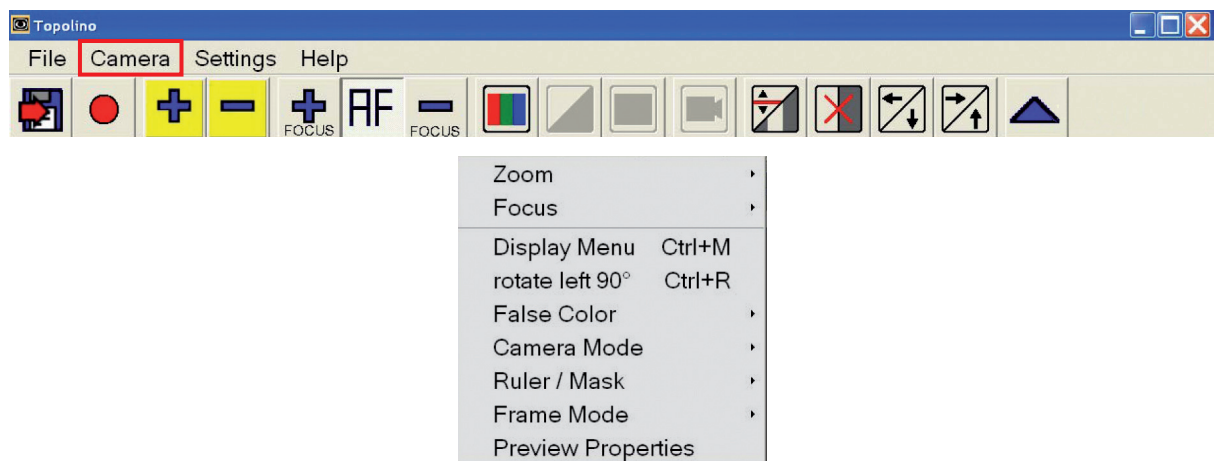


Save Image: With this menu item, the image currently displayed on the monitor can be saved as an image file. These images may be saved in the default directory or in any folder of your choice.

Print: With this menu item, the image currently displayed on the monitor can be printed.

Exit: With this menu item, the program can be terminated.

Camera



Zoom: Increase or decrease the magnification levels.

Focus: Turn the Autofocus feature on and off. With Autofocus off, use the “+” and “-” buttons to increase or decrease the focus setting.

Display Menu: This menu item is deactivated.

rotate left 90°: With this menu item you are able to twist the image display on your monitor 180 degrees to the left. Click once more on the entry and the picture will turn another 90 degrees.

False Colour: With this menu item, you can activate or deactivate the use of false, or artificial, colours. False colours are the digital colour combinations that people can use to find the best reading contrast options. To reverse the colour combination (e.g. from black on green to green on black), select the “invert” option. To select a different colour combination, select the “Switch Colour mode” option. Selecting this colour mode button multiple times will scroll through the different false colour options.

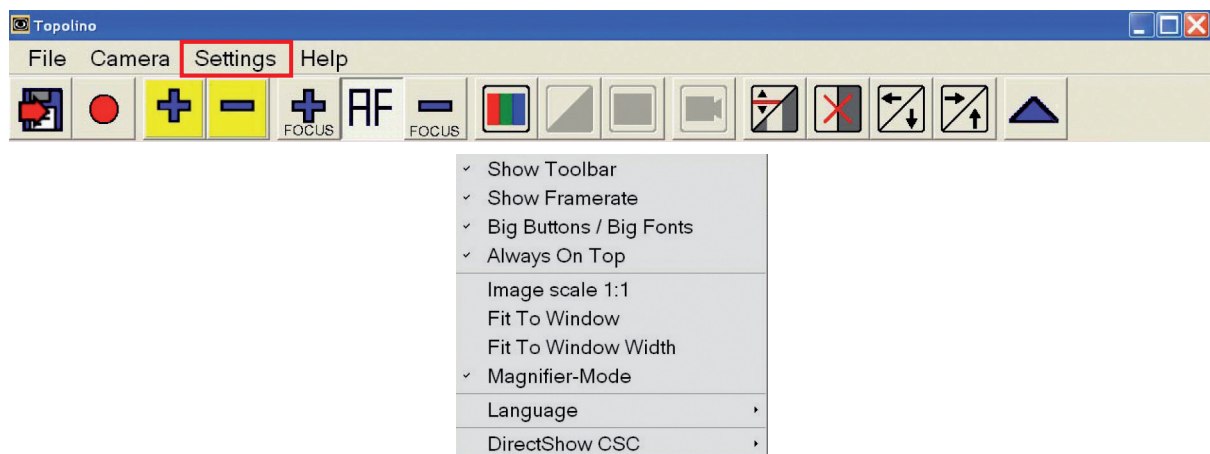
Camera Mode: This function is deactivated, as the switching between reading and distance viewing mode by topolino smart automatically takes place when the camera position changes.

Ruler/Mask: With this Ruler/ Mask button, you can turn on and off both “window marking” and “line marking”. “Windows” or “masks” allow you to create horizontal or vertical windows in which to isolate a portion of the magnified material. You can control and adjust the depth or width of the window. “Line Marking” allows you to create a vertical or horizontal red line or “ruler”. Selecting Ruler/Mask>Switch Mode one time will bring up a vertical red line. As you click on Switch Mode multiple times, you then select a vertical window, followed by a horizontal line, and finally a horizontal window. You can control the position or size of these lines or windows with the arrow key buttons at the far right of the icon toolbar.

Frame Mode: With this menu item you can choose from several different resolution capabilities.

Preview Properties: With this menu item the settings for brightness and the colour saturation can be carried out.

Settings



Show Toolbar: Use this option to turn the icon tool bar on and off. This toolbar is located right below the menu bar.

Show Framerate: With this menu item, the adjusted picture-frequency (fps) in the upper right corner of the monitor can be selectively shown or hidden.

Big Buttons / Big Fonts: With this menu item, the menu font and the toolbar buttons can be displayed as either small or large.

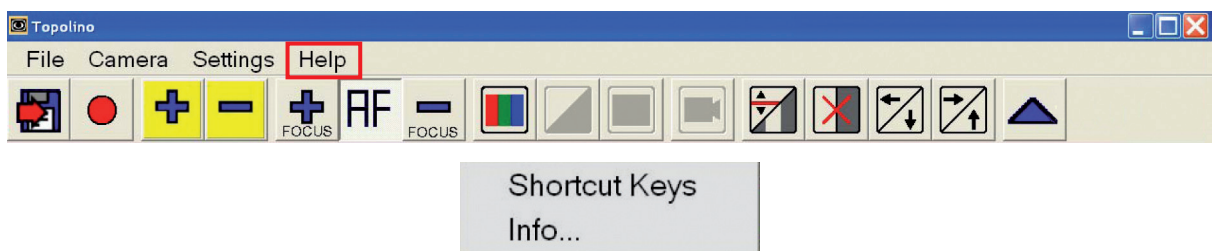
Always On Top: When this option is activated, the topolino-software is always kept on the foreground of the monitor, even when other applications may be running. You can adjust the size of the topolino software window in order to create the best working space with other programs. Re-size the software window by dragging from the corners of the window. In this manner, you can create a split screen, with the topolino window at the top of your screen, and another application at the bottom (or vice versa).

Image Scale1:1, adapting to fit the size of the window, adapting to the dimensions of the window: Use this menu item the frame mode on the monitor can individually be adjusted.

Language: Use this menu item to select between English, German, French and Dutch as the language for all software menu items.

DirectShow CSC: Use this menu item to choose between four possibilities for image transmission (Auto, AVI Decompressor, Colour Space Converter, None). It is recommended to set the transferring images to automatic “AF”.

Help



Shortcut Keys: With this menu bar you can view the list of all keyboard shortcuts. When using the shortcuts you get quicker access to your desired functions and/ or command.

Information: With this menu bar you will receive further information about the product, the current used software version as well as information about the manufacturer of the system and its address.

Description of the toolbar



Save picture: The displayed camera image can be saved as an image file. These pictures can be saved on your computer in the default directory or any other folder you choose.



Record start: Will record a video sequence.

Note: This function is only available, when the option “record” was activated during installation!

For recording, click on the icon and select the desired file name and location.

Note: The button blinks during recording.

Click the symbol again and recording will stop.



Zoom Plus: Increase magnification.



Zoom Minus: Decrease magnification.



Autofocus: AF will turn the Autofocus on and off. Autofocus allows the camera to automatically find the most appropriate sharpness setting within your image scale. At the highest magnification settings, the camera automatically provides a sharp image.



Focus Plus, Focus Minus: With Autofocus turned off, you can manually adjust the sharpness using the Focus Plus and Focus Minus icons.



Artificial colours/ Full colour mode: This menu option switches between fill colour mode and false (or artificial) colour modes.



Invert: (only selectable in artificial colour mode): reverse (or invert) background and foreground colours.



Change colour mode: (only selectable in artificial colour mode): Move to the next artificial colour combination.



Camera modes: This function is deactivated, as the switching between reading and distance viewing mode by topolino smart automatically takes place when the camera position changes.



Ruler-/Masks-Mode switch: Activate and then switch between the options, vertical ruler, horizontal ruler, vertical line coverage and horizontal line coverage.



Ruler/Masks reverse: Deactivate the ruler and mask.



Ruler/Masks to the left/ downwards, Ruler/Masks to the right / upwards:



Move the ruler and/ or the mask (window) horizontally and vertically.



Camera image On/Off: Over the browse button the camera picture can be selectively shown or hidden.

Technical Data

- Magnification: 19"W TFT-screen, resolution 1440 x 900 pixel: approx. 2,0 - 65x
22"W TFT-screen, resolution 1440 x 900 pixel: approx. 2,4 - 76x
22"W TFT-screen, resolution 1680 x 1050 pixel: approx. 1,7 - 57x
24"W TFT-screen, resolution 1440 x 900 pixel: approx. 2,6 - 86x
24"W TFT-screen, resolution 1680 x 1050 pixel: approx. 2,0 - 64x
- Weight: approx. 2,3 kg
- Measurements (BxHxT): built: 19 x 45 x 45 cm
assembled: 19 x 10 x 36 cm
- Electricity supply: Input: 100-240 VAC 50/60 Hz / 700mA,
Output: 12 VDC 2,5 A (in connection with power supply)
- Power consumption: approx. 20 Watt
- Battery: Li-Ion 7,2 V 6600 mAh, Type: LCR186500
- Battery charging time: approx. 3,5 hours
- Battery operating time (with illumination): approx. 4 hours
- Video recording: approx. 6 MB per second by 1920 x 1072 pixel resolution

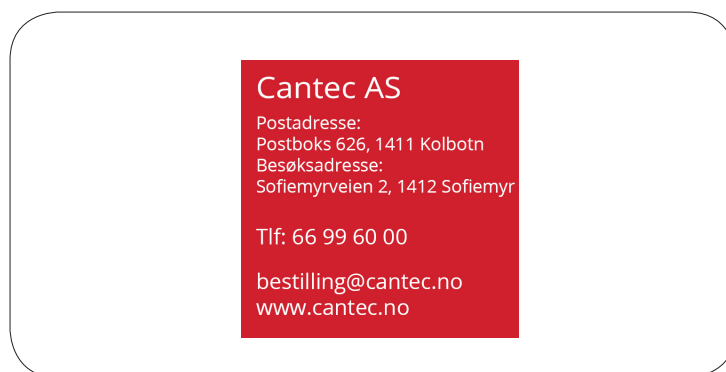
Warranty Information

1. Reinecker Vision GmbH grants a warranty of 24 months (warranty period only valid within the European Union) against defects in manufacture counted from date of invoice ex Reinecker Vision GmbH.
2. All parts that have been replaced when repairing the unit will automatically become property of Reinecker Vision GmbH.
3. Damage caused by improper use or by non-compliance with the operating instructions will result in the invalidation of the warranty.
4. Interventions from persons other than Reinecker Vision GmbH authorised specialists may lead to invalidity of warranty.
5. Not included in this warranty are light sources serving to illuminate the reading object, batteries and other parts subject to wear and tear.
6. If a warranty claim is necessary, the system has to be returned to the manufacturer in Alsbach-Hähnlein or to your authorised dealer in the original packaging including all components. The manufacturer does not carry the cost for transport, packaging and insurance.

Phone number: +49 (0) 625793110

View our General Terms and Conditions.

Your authorized distributor:



Typ: topolino smart

Serial-Number:

Manufacturer: Reinecker Vision GmbH

Final examination:

Power supply: 100 - 240VAC 50/60 Hz

By using the power supply: 12V DC 2,5 A Type: FW7362M/12

Power consumption: max. 20 Watt

**Reinecker Vision GmbH
International Contact**

sales department, customer relations:

Sandwiesenstraße 19
DE-64665 Alsbach-Hähnlein

customer service:

Erlenweg 3
DE-64665 Alsbach-Hähnlein

Tel.: +49 62 57-93 11-0

Fax: +49 62 57-93 11-8230

Email: info@reineckervision.com

www.reineckervision.com



In case service is necessary, please contact your authorized distributor.

**Reinecker Vision GmbH
Zentrale Deutschland und Export**

Vertrieb, Kundenberatung:

Sandwiesenstraße 19
64665 Alsbach-Hähnlein

Kundendienst:

Erlenweg 3
64665 Alsbach-Hähnlein

Tel.: 0 18 05-54 56 65*

Fax: 0 62 57-93 11-8008

Email: info@reineckervision.de

www.reineckervision.de

*Festnetzpreis 14 ct/min, Mobilfunkpreis max. 42 ct/min

Bitte wenden Sie sich bei Fragen oder einem Servicefall direkt an unser Hauptwerk in Alsbach-Hähnlein oder an eine unserer Niederlassungen.

Bei im Ausland erworbenen Produkten kontaktieren Sie im Servicefall bitte Ihren dort ansässigen Händler.