



# *switch*<sup>™</sup> mouse



**USER MANUAL**  
*Mousing Comfort in the Palm of Your Hand*



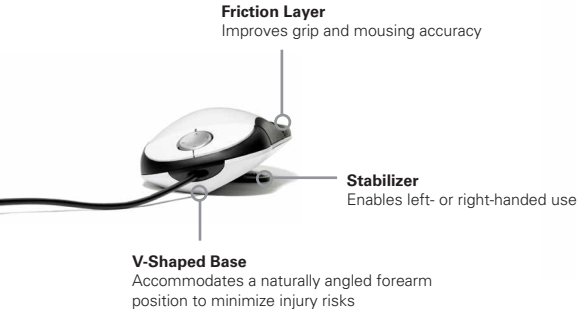
---

# TABLE OF CONTENTS

<b>1</b>	Features
<b>2</b>	Compatibility
<b>3</b>	Switch Mouse Installation
<b>6</b>	Switch Mouse Adjustments
<b>9</b>	Healthy Mousing
<b>13</b>	Cleaning the Switch Mouse
<b>14</b>	Customer Service
<b>14</b>	Warranty
<b>15</b>	Regulatory Information
<b>16</b>	Disposal of the Switch Mouse

## FEATURES

The Switch Mouse is a groundbreaking mousing solution that boosts comfort and reduces the risk of injury with design and technology innovations providing the most ergonomic mouse ever created.



---

## COMPATIBILITY



Certified for Windows Vista

Also compatible with:

Windows 8

Windows 7

Windows XP

Windows 2000

Mac OS 9 (plug-and-play only)

Max OS X (plug-and-play only)

### Minimum System Requirements

Available USB port

CPU 233MHz or faster processor or equivalent

128MB RAM or higher

Hard disk capacity more than 40MB

### Specifications

Resolution: 1200 dpi

Technology: Laser Scanning Technology

Switch: Micro Switch

Current Consumption: Max70mA

Switch Mechanical Life: 1,000,000 cycles

Cable Length: 200 cm (80")

USB Connector

---

# SWITCH MOUSE INSTALLATION

## Quick-Start Installation

The Switch Mouse is a plug-and-play device. To begin use immediately:

Shut down your computer and unplug your existing mouse.

Plug the Switch Mouse into a USB port.

Restart your computer and begin using the Switch Mouse.

The default settings are as follows:

- Left Top Button: Single Left Click
- Right Top Button: Single Right Click
- Middle Button (Navigation Dish): Not Assigned
- Left Side Button: Not Assigned
- Right Side Button: Not Assigned
- Navigation Dish: Vertical Page Scrolling

---

## Driver Installation

To take advantage of customizable button functions and to control scrolling speed, install the convenient Switch Mouse driver following the Quick-Start Installation.

The Switch Mouse Driver is certified for use with Windows Vista, and is also compatible with Windows 8, Windows 7, Windows XP and Windows 2000.

### To install the driver:

1. Visit the “Downloads” page at [www.humanscale.com](http://www.humanscale.com).
2. Select the “Mouse Drivers” category, then download the Executable Switch Mouse driver to your hard drive.
3. When prompted, select “Save” and proceed to step 4, or select “Run” and proceed to step 5.
4. Navigate to the downloaded file and double-click to launch the installation.
5. Follow on-screen prompts.
6. Once the installation is complete, a Switch Mouse icon will appear on your Taskbar.



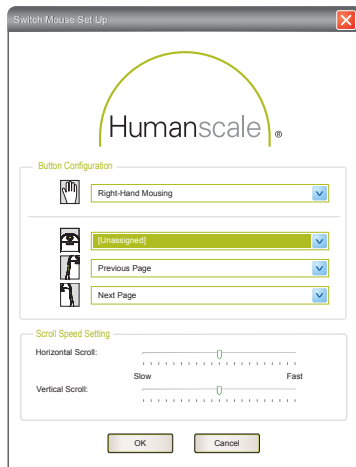
Switch Mouse Icon

## To customize Switch Mouse functions:

1. Double-click the Switch Mouse icon on your Taskbar.
2. Under “Button Configuration,” select either “Right-Hand Mousing” or “Left-Hand Mousing” to indicate which hand will control the Switch Mouse, then use the remaining drop-down menus to assign specific tasks to each of the three programmable buttons, which include the:
  - Middle Button (Navigation Dish)
  - Left Side Button
  - Right Side Button
3. Under “Scroll Speed,” use the sliders to control the horizontal and vertical scroll speed of your navigation dish.
4. A number of additional mousing functions can be controlled by your operating system. Configure your mouse settings, such as double-click speed and pointer options, from your Control Panel.

## Uninstalling the Driver

To uninstall the Switch Mouse Driver, select **Start > Programs > Switch Mouse > Uninstall**.



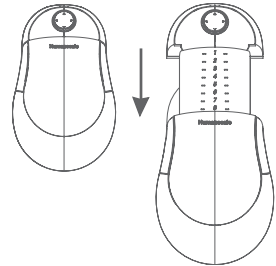
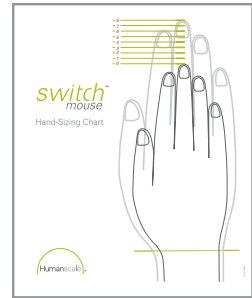


# SWITCH MOUSE ADJUSTMENTS

## Sizing the Switch Mouse

The Switch Mouse features a patented size-adjustability feature to ensure a proper fit for most users. To determine the most comfortable Switch Mouse size for you:

1. Place your hand on the enclosed Switch Mouse Hand-Sizing Chart, positioning the location where your wrist meets your palm along the green line.
2. Determine which size corresponds to the tip of your middle finger.
3. Grasp the front and rear portions of the Switch Mouse and pull apart to reveal the sliding extender.
4. Set the extender to the numeral that corresponds with the tip of your middle finger on the chart.



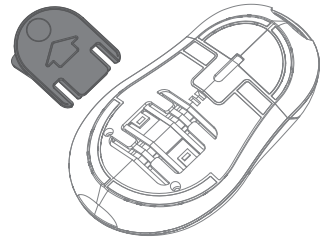
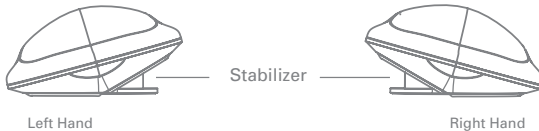
---

# SWITCH MOUSE ADJUSTMENTS

## Left-Handed Use

Thanks to its symmetric design, the Switch Mouse accommodates both left- and right-handed users. The Switch Mouse ships ready for right-handed use.

To physically accommodate left-handed use, simply remove the stabilizer from the left side of the mouse by sliding it outward in the direction of the arrow, and reinsert on the right side. The Switch Mouse will now support the left hand at a healthy 45-degree angle.



---

To enable left-handed clicking utilize the Switch Mouse driver (pages 4-5), or adjust your mouse settings:

### **Windows 7 / Windows 8**

Select **Start > Control Panel > Ease of Access > Change how your mouse works**. Scroll down and select **Mouse Settings**. On the **Buttons** tab, under **Button configuration**, select **Switch primary and secondary buttons**.

### **Windows Vista**

Select **Start > Control Panel > Ease of Access > Ease of Access Center**. Under **Explore all settings**, select **Make the mouse easier to use**. Under **See also**, select **Mouse settings**. On the **Buttons** tab, under **Button configuration**, select **Switch primary and secondary buttons**.

### **Windows XP**

Select **Start > Settings > Control Panel > Mouse**. Under the **Buttons** tab, select the check box next to **Switch primary and secondary buttons**.

### **Windows 2000**

Select **Start > Settings > Control Panel > Mouse**. Under the **Buttons** tab, select the **Left-handed** radio button under **Button Configuration**.

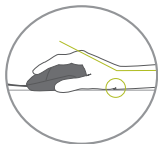
### **Mac OS X, version 10.4.2 or later**

Select **Finder > Applications > System Preferences > Keyboard and Mouse**. Under the **Mouse** tab, select the **Right** radio button under **Primary mouse button**.

---

## HEALTHY MOUSING

Based entirely on the latest human factors research, the Switch Mouse is specifically designed to minimize the health risks associated with long-term mousing, including tendonitis and carpal tunnel syndrome. Rich in ergonomic features, the innovative Switch Mouse ensures you'll mouse in comfort.



**Problem:**  
**Wrist Anchoring**

Computer users often anchor the crease of their wrists to the work surface while mousing, a position linked to two injury risk factors—contact stress and wrist extension (the bending of the wrist toward the body)—which increase intracarpal tunnel pressure and the risk of injury.

**Solution:**  
**Switch Mouse Palm Support**

The Switch Mouse integrated palm support prevents wrist anchoring. Mousing with a supported palm also encourages the use of large arm and shoulder muscles, which are much less likely to fatigue than delicate wrist and hand muscles.





**Problem:**

**One Size Does Not Fit All**

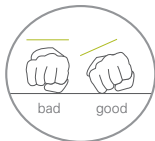
Most mice do not address the unique requirements of each user, and poor fit can lead to excessive clenching of the hand, muscle fatigue, and discomfort.

**Solution:**

**Switch Mouse Adjustability Feature**

The Switch Mouse, with its patented length adjustment, can be sized to fit every user, while its symmetric shape equally accommodates right- or left-handed use of the device.



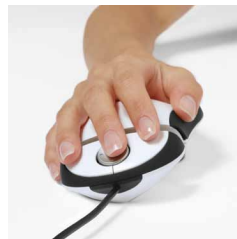


**Problem:**  
**Unnatural Angles**

Traditional mice force the base of the palm to be horizontal to the work surface, which increases wrist and forearm pronation and elevates intracarpal tunnel pressure and the risk for injury.

**Solution:**  
**Switch Mouse V-Shaped Base**

The tilt of the Switch Mouse, created by the V-shaped bottom of the device, positions the wrist and forearm at a natural angle known to minimize pressure in the carpal tunnel.





**Problem:**

**Repetitive Motion Risks**

While scroll wheels provide convenience, they encourage repetitive motion of the fingers and have been linked to tendon disorders.

**Solution:**

**Switch Mouse Navigation Dish**

The Switch Mouse's circular navigation dish minimizes repetitive motion by accommodating scrolling with a single click. As an added benefit, it also allows for horizontal scrolling.



---

## CLEANING THE SWITCH MOUSE

Your Switch Mouse may require occasional cleaning. Follow these steps to keep the mouse in good working order.

1. Shut down your computer and unplug the Switch Mouse's USB cable.
2. Open the extender fully and remove the stabilizer, if necessary.
3. Wipe the surface of the Switch Mouse and its stabilizer with a lint-free cloth. A toothpick may be used to remove debris from crevices.
4. A cloth dampened with water and a mild detergent may be necessary for tough stains. Be sure to allow all parts to dry thoroughly.
5. Reinsert stabilizer and return extender to your preferred position.
6. Plug the Switch Mouse back into the USB port and restart your computer to begin use.



---

## **CUSTOMER SERVICE**

Having trouble with your Switch Mouse? Visit [humanscale.com](https://www.humanscale.com) for troubleshooting information, or contact Humanscale Customer Service at 800-400-0625.

## **WARRANTY**

THE FOLLOWING WARRANTY IS IN LIEU OF ALL OTHER WARRANTIES EXPRESS OR IMPLIED, INCLUDING, BUT NOT LIMITED TO, THE IMPLIED WARRANTY OF MERCHANTABILITY AND FITNESS FOR A PARTICULAR PURPOSE AND ALL OTHER WARRANTIES ARISING FROM COURSE OF DEALING OR USAGE OF TRADE.

Humanscale offers a one-year warranty on the Switch Mouse.

This Warranty is applicable to the initial purchaser only and is non-transferable. Humanscale warrants that, at the time of customer's receipt, the product will be in good working order and will be free from defects in material and workmanship. This Warranty does not apply to normal wear and tear or damage caused by accident, neglect, misuse or improper installation or operation. Humanscale will not be responsible for damage due to service, maintenance, modifications or tampering by anyone other than a Humanscale authorized representative. In the event a product is defective and Humanscale receives written notice of the defect within the Warranty period, Humanscale, at its option, will either repair or replace the defective product. This Warranty does not cover damage caused by a carrier or transportation of the product from one location to another, or alterations made by owner.

---

## **REGULATORY INFORMATION**

### **FCC Declaration of Conformity**

The Switch Mouse has been tested and found to comply with the requirements for a class B digital device, pursuant to part 15 of the FCC Rules. These requirements are designed to provide reasonable protection against harmful interference in a residential or office installation. The user is cautioned that changes and/or modifications made to the equipment could void the user's authority to operate this equipment.

### **CE Declaration of Conformity**

Humanscale Corporation declares under our sole responsibility that the Switch Mouse is in compliance with the essential requirements and other relevant provisions of applicable EC directives.

---

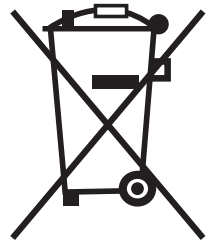
## DISPOSAL OF THE SWITCH MOUSE

The Switch Mouse circuit board was designed in accordance with the Waste Electrical and Electronic Equipment (WEEE) Directive, a European Union legislative initiative aimed at reducing the amount of electronic waste in landfills through a series of collection, recycling and recovery guidelines.

The Switch Mouse is constructed primarily of recyclable, injection-molded ABS. When it reaches the end of its useful life, Humanscale encourages you to dispose of the Switch Mouse in an environmentally responsible fashion. Familiarize yourself with your state and local recycling and waste disposal policies and regulations and comply accordingly.

### **Disposal of Waste Electrical and Electronic Equipment in the European Union**

The use of this symbol indicates that this product may not be treated as household waste. By ensuring this product is disposed of correctly, you will help prevent potential negative consequences for the environment and human health, which could otherwise be caused by inappropriate waste handling of this product. For more detailed information about recycling of this product, please contact your local city office, your household waste disposal service or the shop where you purchased the product.





# *switch*<sup>™</sup> *mouse*



© 2008 – 2009 Humanscale Corporation. All rights reserved.

Humanscale and the Humanscale logo are registered trademarks of Humanscale Corporation. Switch Mouse is a trademark of Humanscale Corporation. Windows, Windows Vista, Windows XP and Windows 2000 are trademarks and/or registered trademarks of Microsoft Corp. in the U.S. and other countries. Mac and Mac OS are trademarks of Apple Inc., registered in the U.S. and other countries.